

MADISONVILLE, TEXAS

AL-6843 (FAA)

19311

APP CRS 183°	Rwy Idg 3202
	TDZE 287
	Apt Elev 287

RNAV (GPS) RWY 18

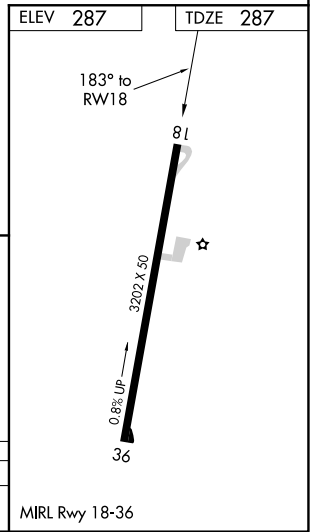
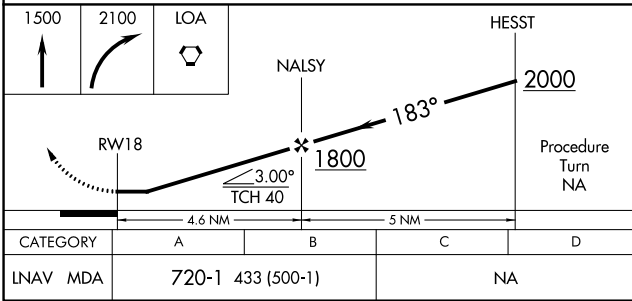
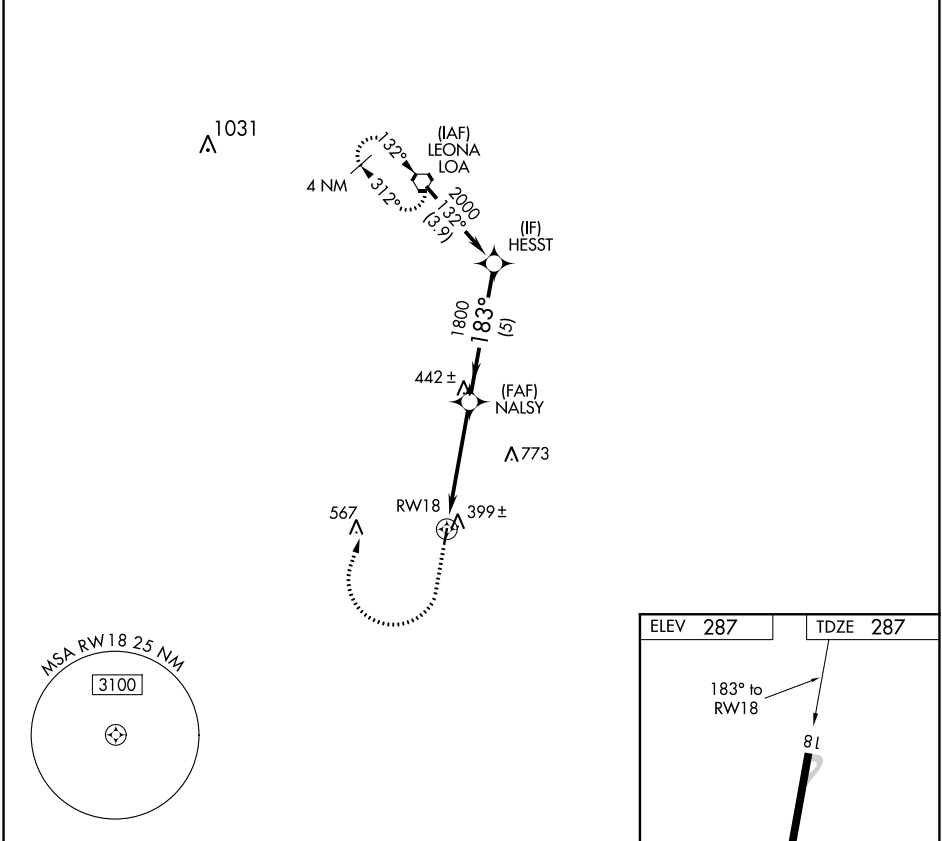
MADISONVILLE MUNI (51R)

RNP APCH.

▼ Use Huntsville Muni altimeter setting.
 ▲ NA Procedure NA at night.
 Rwy 18 helicopter visibility reduction below 1 SM NA.

MISSED APPROACH: Climb to 1500, then climbing right turn to 2100 direct LOA VORTAC and hold.

UTS ASOS 119.425	HOUSTON CENTER 134.8 269.6	CTAF 122.9
----------------------------	--------------------------------------	----------------------



SC-5, 05 SEP 2024 to 03 OCT 2024

SC-5, 05 SEP 2024 to 03 OCT 2024