

WAAS CH <b>97334</b> <b>W24A</b>	APP CRS <b>227°</b>	Rwy Idg <b>3798</b> TDZE <b>596</b> Apt Elev <b>597</b>
--	------------------------	---

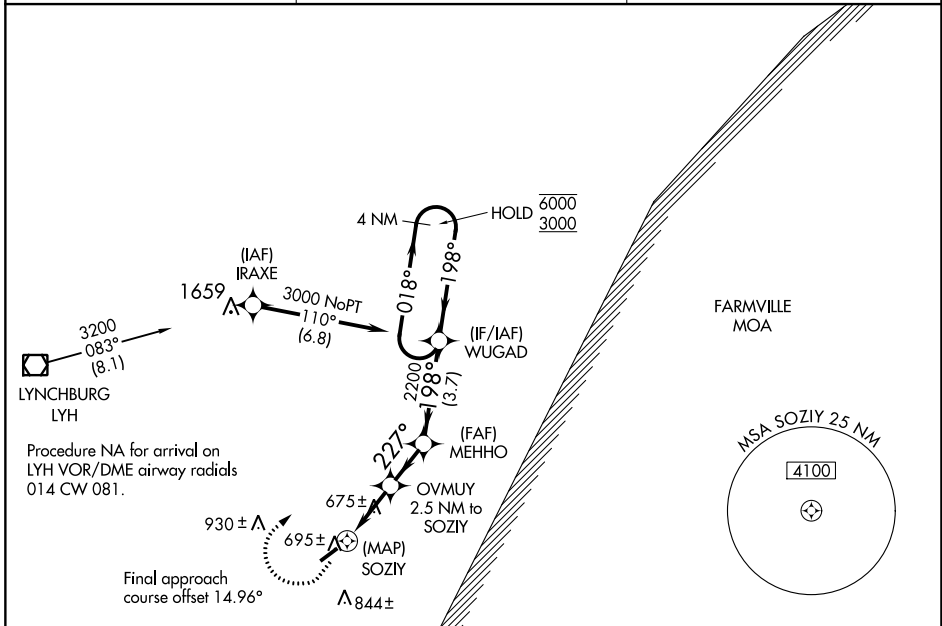
**RNAV (GPS) RWY 24**  
BROOKNEAL/CAMPBELL COUNTY (ØV4)

RNP APCH.

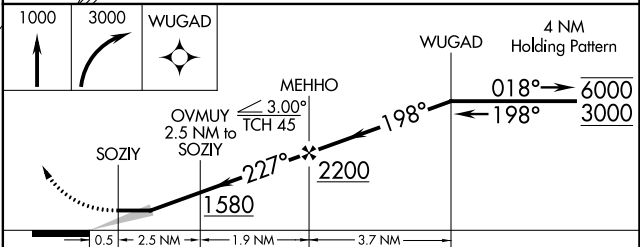
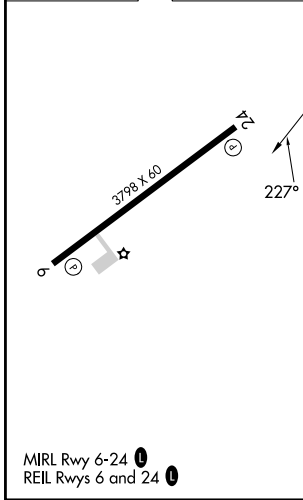
▼ When local altimeter setting not received, use Lynchburg Rgnl/Preston Glenn Fld altimeter setting and increase all MDA 100 feet.

▲ MISSED APPROACH: Climb to 1000 then climbing right turn to 3000 direct WUGAD and hold.

AWOS-3 <b>120.575</b>	ROANOKE APP CON <b>135.0 254.325</b>	UNICOM <b>122.7 (CTAF) Ø</b>
--------------------------	---	---------------------------------



ELEV 597	TDZE 596
----------	----------



CATEGORY	A	B	C	D
LP MDA	940-1	344 (400-1)		NA
LNAV MDA	960-1	364 (400-1)		NA
CIRCLING	1120-1 523 (600-1)	1180-1 583 (600-1)		NA

NE-3, 05 SEP 2024 to 03 OCT 2024

NE-3, 05 SEP 2024 to 03 OCT 2024