

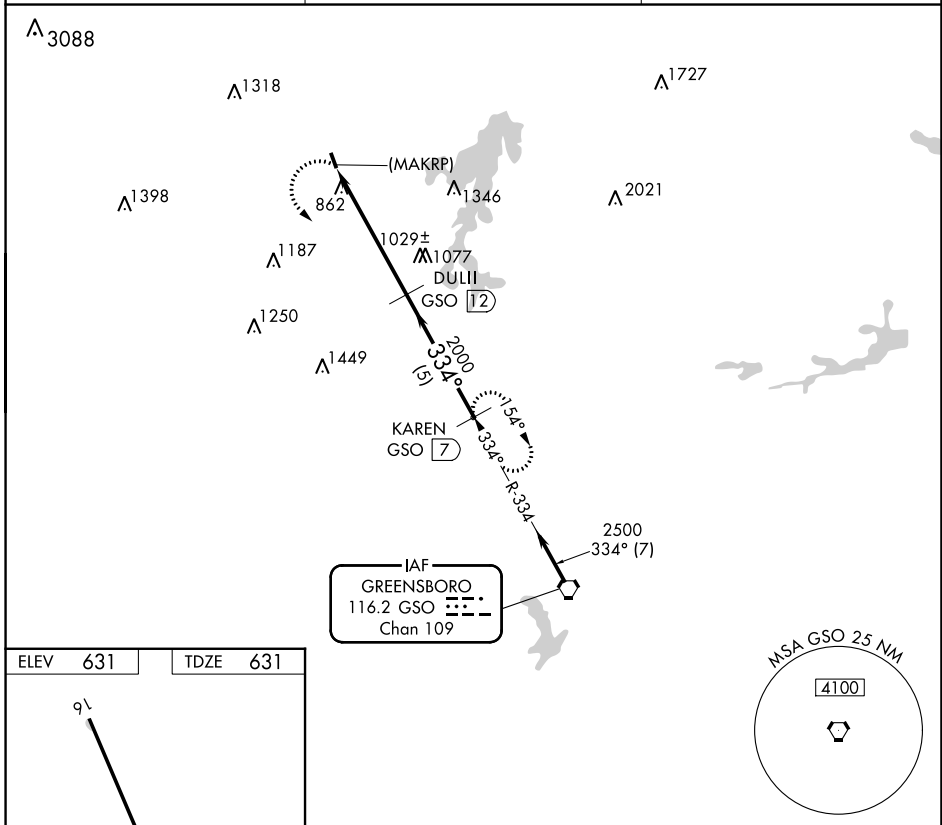
VORTAC GSO	APP CRS	Rwy ldg TDZE	2725
116.2	334°	631	
Chan 109		Apt Elev	631

VOR/DME or GPS RWY 34

MEADOW BROOK FLD (N63)

NA Use Reidsville altimeter setting. Procedure NA at night. MISSED APPROACH: Climbing left turn to 2500 via GSO R-334 to KAREN GSO 7 DME and hold.

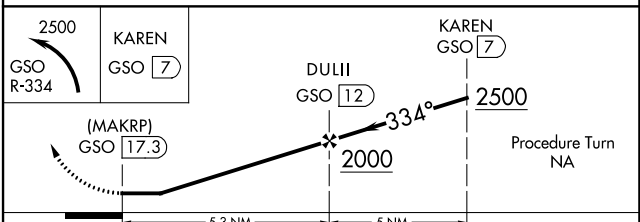
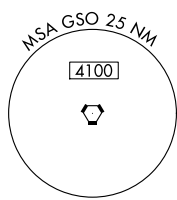
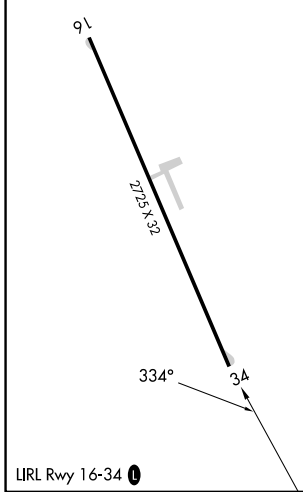
SIF AWOS-3 119.775	GREENSBORO APP CON 124.35 269.225	UNICOM 123.0 (CTAF)
------------------------------	---	-------------------------------



SE-2, 05 SEP 2024 to 03 OCT 2024

SE-2, 05 SEP 2024 to 03 OCT 2024

ELEV	631	TDZE	631
------	-----	------	-----



CATEGORY	A	B	C	D
S-34	1400-1 769 (800-1)	1400-1¼ 769 (800-1¼)	NA	
CIRCLING	1400-1 769 (800-1)	1440-1¼ 809 (900-1¼)	NA	