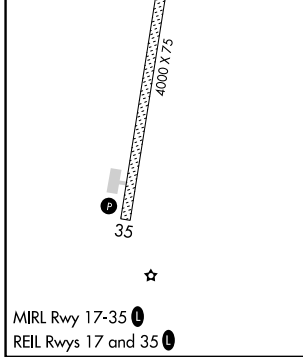
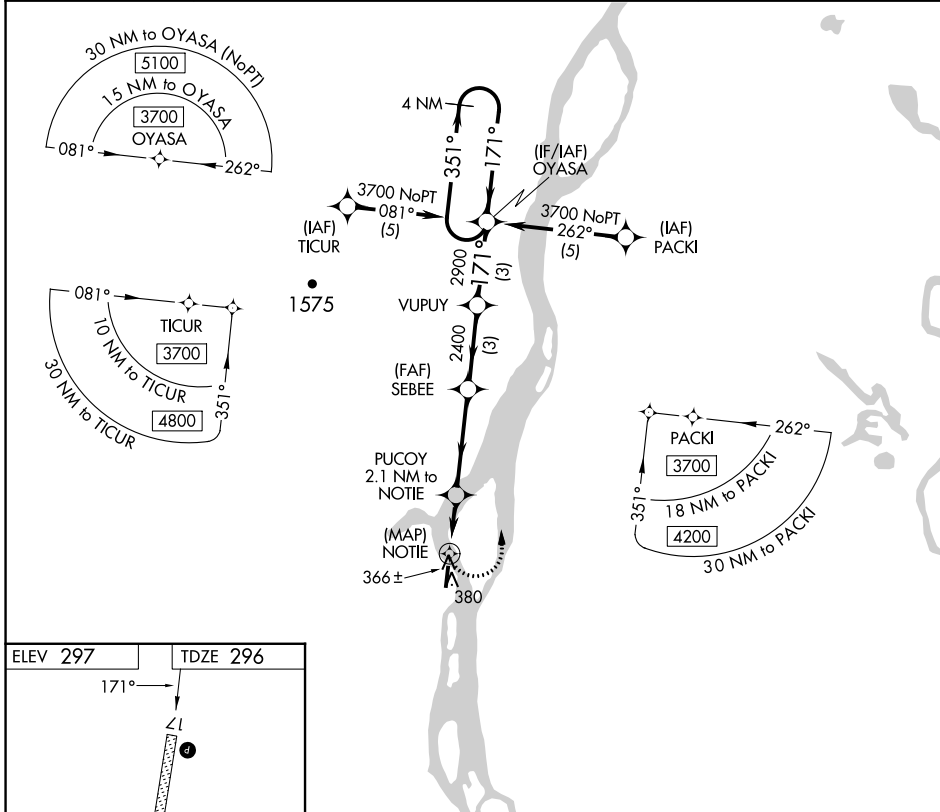


| | | |
|-------------|----------|-------------|
| APP CRS | Rwy Idg | 4000 |
| 171° | TDZE | 296 |
| | Apt Elev | 297 |

RNAV (GPS) RWY 17

ANVIK (ANV)(PANV)

| | | | |
|---|--------------------|--|-----------------------|
| RNP APCH - GPS. | | MISSED APPROACH: Climbing left turn to 3700 direct OYASA and hold, continue climb-in-hold to 3700. | |
| Rwy 17 helicopter visibility reduction below 3/4 SM NA. | | | |
| AWOS-3P | ANCHORAGE CENTER | KENAI RADIO | UNICOM |
| 133.55 | 135.7 335.5 | 122.4 | 122.7 (CTAF) 0 |



| | | | | | |
|---|----------|--|--------|--------------|-------------|
| ELEV 297 | TDZE 296 | | | | |
| 3700 | OYASA | VGSi and descent angles not coincident (VGSi Angle 3.00/TCH 25). | | | |
| PUCOY 2.1 NM to NOTIE SEBEE VUPLY OYASA 4 NM Holding Pattern | | | | | |
| 0.5 | 2.1 NM | 3.8 NM | 3 NM | 3 NM | |
| CATEGORY | A | B | C | D | |
| LNAV MDA | 700-1 | 404 (500-1) | 700-1½ | 404 (500-1½) | |
| CIRCLING | 840-1 | 543 (600-1) | 840-1½ | 860-2 | 563 (600-2) |

AK, 05 SEP 2024 to 31 OCT 2024

AK, 05 SEP 2024 to 31 OCT 2024