

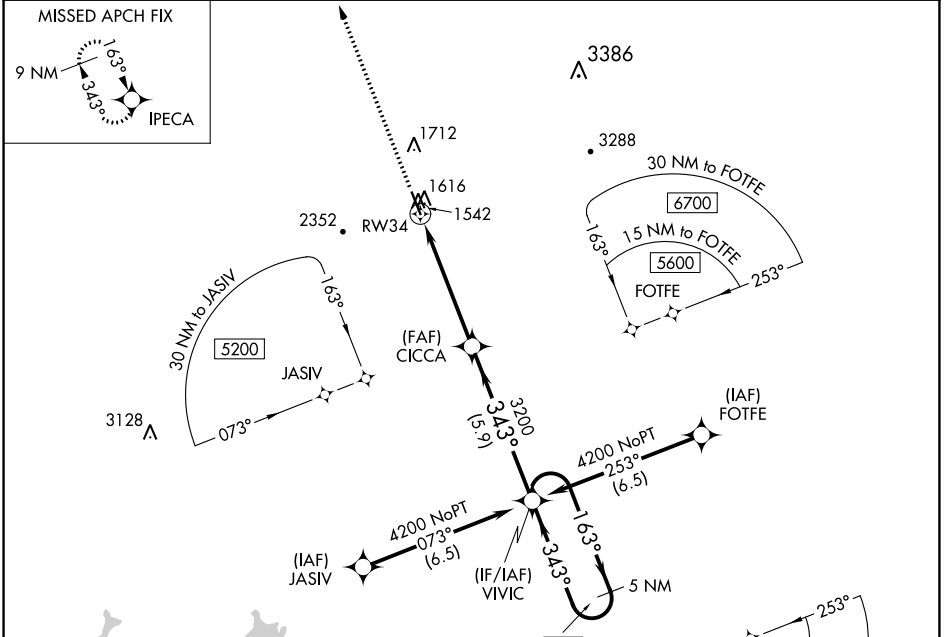
WAAS CH 77705 W34A	APP CRS 343°	Rwy Idg TDZE 1535 Apt Elev 1535
--	------------------------	---

RNAV (GPS) RWY 34

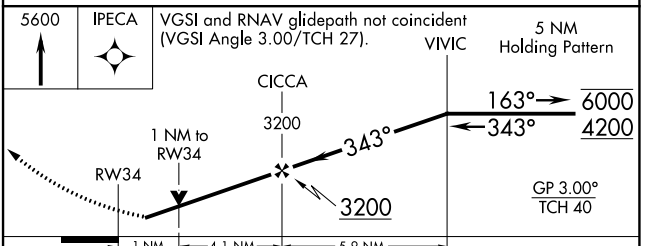
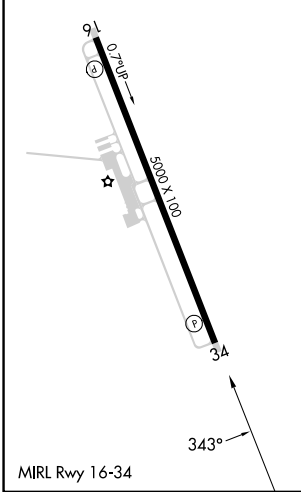
PICKENS COUNTY (JZP)

RNP APCH - GPS.		MISSED APPROACH: Climb to 5600 direct IPECA and hold, continue climb-in-hold to 5600.
Rwy 34 helicopter visibility reduction below $\frac{3}{4}$ SM NA.		

AWOS-3PT 120.025	ATLANTA CENTER 133.1 342.425	UNICOM 122.725 (CTAF)
----------------------------	--	---------------------------------



ELEV 1535	TDZE 1535
-----------	-----------



CATEGORY	A	B	C	D
LPV DA	1789- $\frac{3}{4}$	254 (300- $\frac{3}{4}$)		NA
LNAV MDA	1880-1	345 (400-1)		NA
CIRCLING	2040-1 505 (600-1)	2380-1 $\frac{1}{4}$ 845 (900-1 $\frac{1}{4}$)	2800-3 1265 (1300-3)	NA

SE-4, 05 SEP 2024 to 03 OCT 2024

SE-4, 05 SEP 2024 to 03 OCT 2024