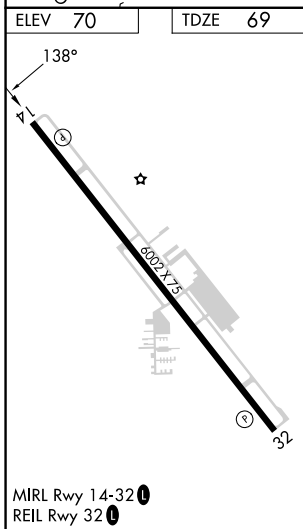
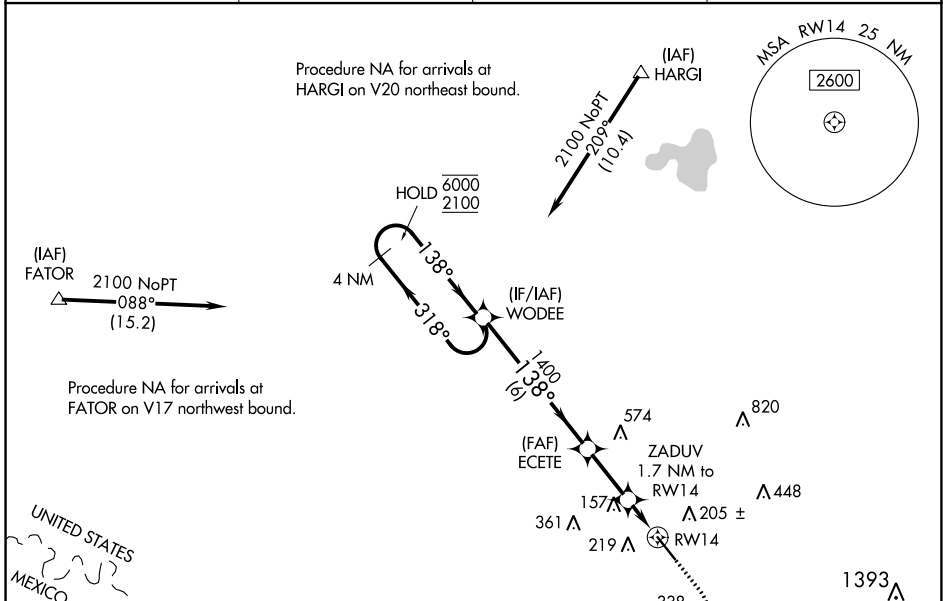


WAAS CH 70341 W14A	APP CRS 138°	Rwy Idg TDZE Apt Elev	6002 69 70
--	------------------------	-----------------------------	---------------------------------------

RNAV (GPS) RWY 14

MID VALLEY (TXW)

RNP APCH.		MISSED APPROACH: Climb to 900 then climbing right turn to 2100 direct WODEE and hold.	
AWOS-3PT 118.575	VALLEY APP CON 126.55 377.2	CLNC DEL 125.95	UNICOM 122.8 (CTAF)



4 NM Holding Pattern	WODEE	900	2100	WODEE
6000 2100	← 318° → 138°	1400	ZADUV 1.7 NM to RWY14	*LNAV only.
GP 3.00° TCH 50	1400	*660	*0.9 NM to RWY14	RWY14
6 NM		2.3 NM	0.8 NM	0.9 NM
CATEGORY	A	B	C	D
LPV DA		319- ³ / ₄	250 (300- ³ / ₄)	
LNAV/VNAV DA		331- ⁷ / ₈	262 (300- ⁷ / ₈)	
LNAV MDA		420-1	351 (400-1)	
<input checked="" type="checkbox"/> CIRCLING	620-1	550 (600-1)	700-1 ³ / ₄ 630 (700-1 ³ / ₄)	940-2 ³ / ₄ 870 (900-2 ³ / ₄)

SC-3, 05 SEP 2024 to 03 OCT 2024

SC-3, 05 SEP 2024 to 03 OCT 2024