

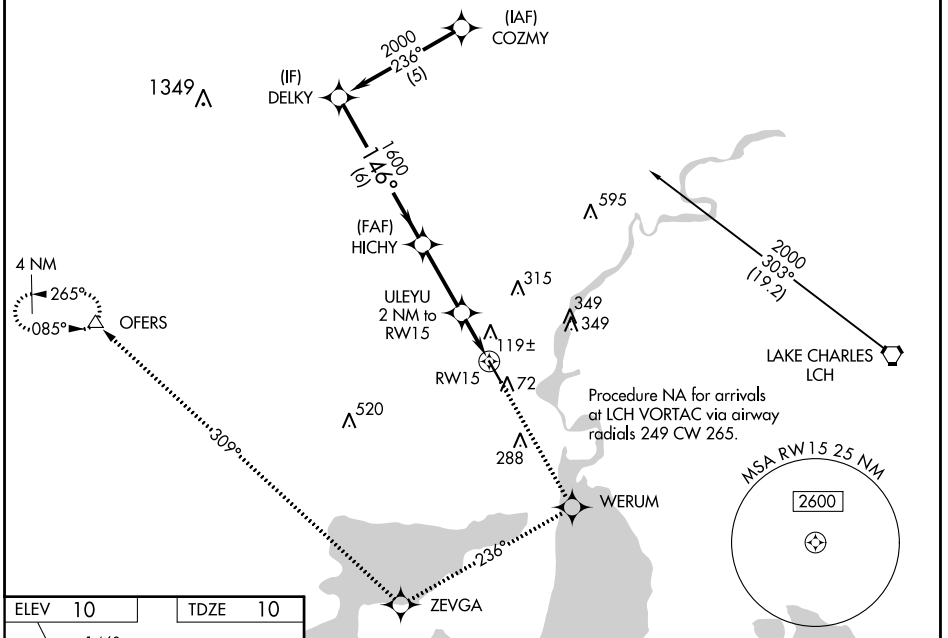
WAAS CH 86711 W15A	APP CRS 146°	Rwy Idg TDZE Apt Elev	5001 10 10
--	------------------------	-----------------------------	---------------------------------------

RNAV (GPS) RWY 15

SOUTHLAND FLD (UXL)

RNP APCH-GPS	<p>⚠ Inoperative table does not apply to LNAV/VNAV. Baro-VNAV NA when using Lake Charles Rgnl altimeter setting. For uncompensated Baro-VNAV systems, LNAV/VNAV NA below -15°C or above 48°C. Rwy 15 helicopter visibility reduction below 3/4 SM NA. When local altimeter setting not received, use Lake Charles Rgnl altimeter setting and increase LPV DA to 438 feet and all visibilities 1/4 SM; increase LNAV/VNAV DA to 438 feet; increase all MDAs 20 feet and Circling visibility Cat C/D 1/4 SM. VDP NA when using Lake Charles Rgnl altimeter setting.</p>	<p>ODALS</p>	<p>MISSED APPROACH: Climb to 2500 direct WERUM and via 236° track to ZEVGA and via 309° track to OFERS and hold.</p>
--------------	--	--------------	--

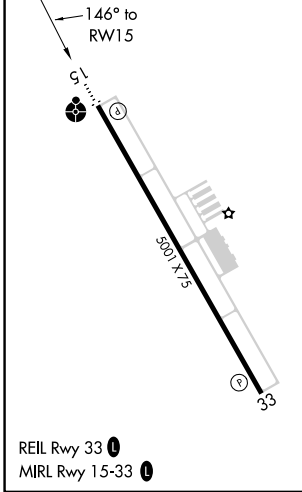
AWOS-3PT 118.175	LAKE CHARLES APP CON * 119.35 282.3	UNICOM 122.8 (CTAF) 0
----------------------------	---	---------------------------------



SC-4, 05 SEP 2024 to 03 OCT 2024

SC-4, 05 SEP 2024 to 03 OCT 2024

ELEV 10	TDZE 10
---------	---------



SULPHUR, LOUISIANA
Orig-A 09SEP21

Procedure Turn NA	2500	WERUM	tr 236°	ZEVGA	tr 309°	OFERS
DELKY						△
2000		HICHY		ULEYU 2 NM to RW15		*LNAV only
GP 3.00° TCH 40		146°		*1.1 NM to RW15		
VGSI and RNAV glidepath not coincident (VGSI Angle 3.00/TCH 50).		1600		*680		
	6 NM	2.8 NM	0.9	1.1		
CATEGORY	A	B	C	D		
LPV DA		309-1	299 (300-1)			
LNAV/VNAV DA		419-1½	409 (500-1½)			
LNAV MDA		380-¾	370 (400-¾)		380-1¼	370 (400-1¼)
CIRCLING	420-1 410 (500-1)	520-1 510 (600-1)	680-1¾ 670 (700-1¾)		680-2 670 (700-2)	

30° 08' N-93° 23' W

RNAV (GPS) RWY 15

SOUTHLAND FLD (UXL)