

WAAS CH <b>77717</b> <b>W35A</b>	APP CRS <b>352°</b>	Rwy ldg TDZE Apt Elev	<b>4000</b> <b>1035</b> <b>1040</b>
--	------------------------	-----------------------------	---

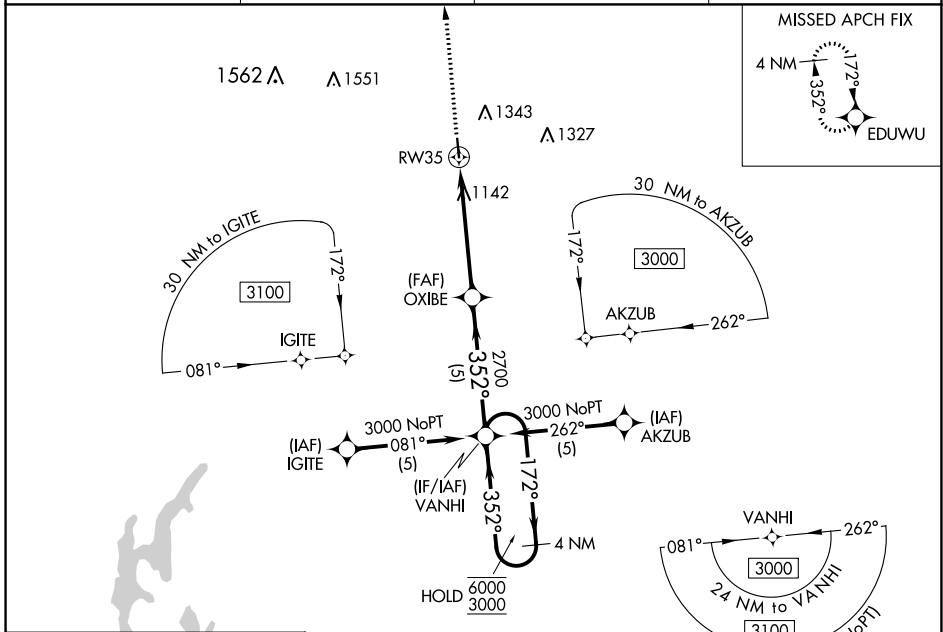
# RNAV (GPS) RWY 35

CAMERON MEML (E/ZZ)

**RNP APCH.**  
 ▼ Rwy 35 helicopter visibility reduction below 3/4 SM NA. For uncompensated Baro-VNAV systems, LNAV/VNAV NA below -17°C or above 54°C.

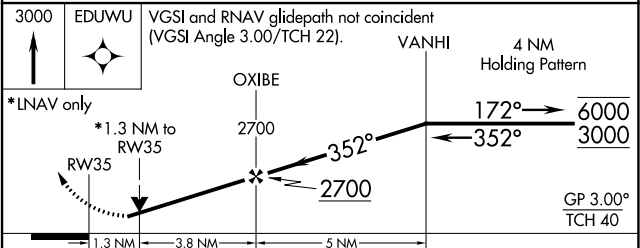
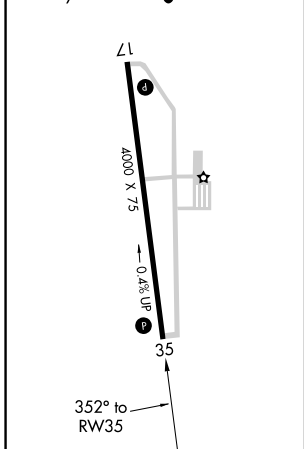
**MISSED APPROACH:** Climb to 3000 direct EDUWU and hold.

AWOS-3 <b>121.05</b>	KANSAS CITY APP CON <b>118.4 307.35</b>	CLNC DEL <b>121.6</b>	UNICOM <b>122.8 (CTAF) ①</b>
-------------------------	--	--------------------------	---------------------------------



ELEV 1040	TDZE 1035
-----------	-----------

MIRL Rwy 17-35 ①  
 REIL Rwys 17 and 35 ①



CATEGORY	A	B	C	D
LPV DA	1285-3/4	250 (300-3/4)		NA
LNAV/VNAV DA	1310-7/8	275 (300-7/8)		NA
LNAV MDA	1460-1	425 (500-1)		NA
CIRCLING	1660-1	620 (700-1)		NA

NC-3, 05 SEP 2024 to 03 OCT 2024

NC-3, 05 SEP 2024 to 03 OCT 2024