

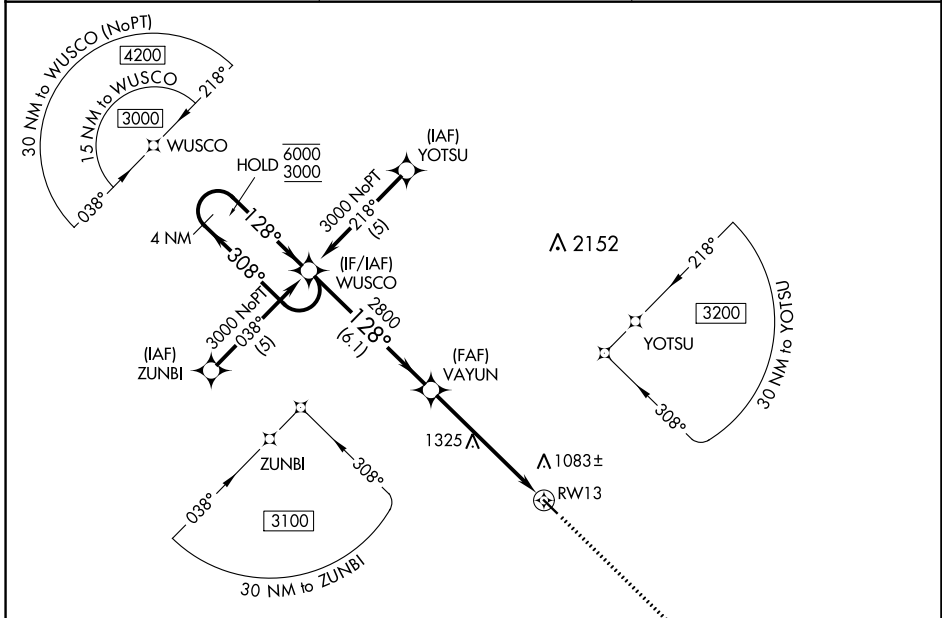
APP CRS	Rwy Idg	<b>3901</b>
<b>128°</b>	TDZE	<b>933</b>
	Apt Elev	<b>933</b>

# RNAV (GPS) RWY 13

CASSELTON ROBERT MILLER RGNL (5N8)

RNP APCH.	Rwy 13 helicopter visibility reduction below 3/4 SM NA. Use Fargo altimeter setting; when not received use Morehead altimeter setting and increase all MDA 20 feet.	MISSED APPROACH: Climb to 3000 direct JINPU and hold.
FAR ASOS <b>124.5 379.2</b>		

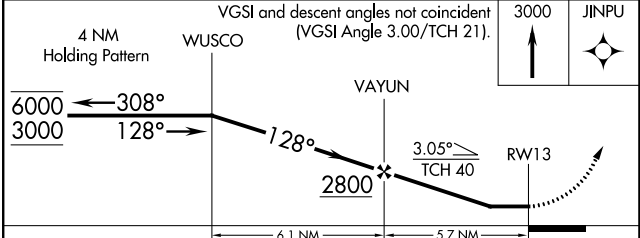
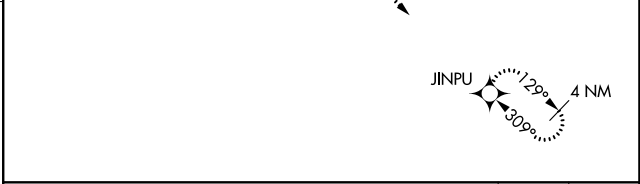
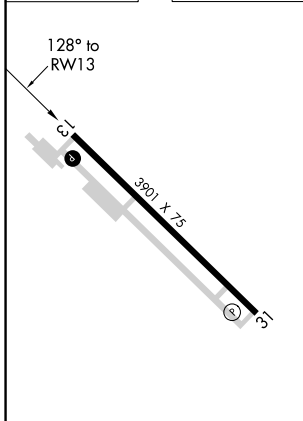
FAR ASOS <b>124.5 379.2</b>	FARGO APP CON <b>120.4 377.15</b>	UNICOM <b>122.8 (CTAF) 1</b>
--------------------------------	--------------------------------------	---------------------------------



NC-1, 05 SEP 2024 to 03 OCT 2024

NC-1, 05 SEP 2024 to 03 OCT 2024

ELEV 933	TDZE 933
----------	----------



REIL Rwy 31 1	MIRL Rwy 13-31 1				
CATEGORY	A	B	C	D	
LNAV MDA	1620-1	687 (700-1)	1620-2 687 (700-2)	NA	