

WAAS CH 48841 W23A	APP CRS 228°	Rwy Idg TDZE Apt Elev	3398 878 879
--	------------------------	-----------------------------	---

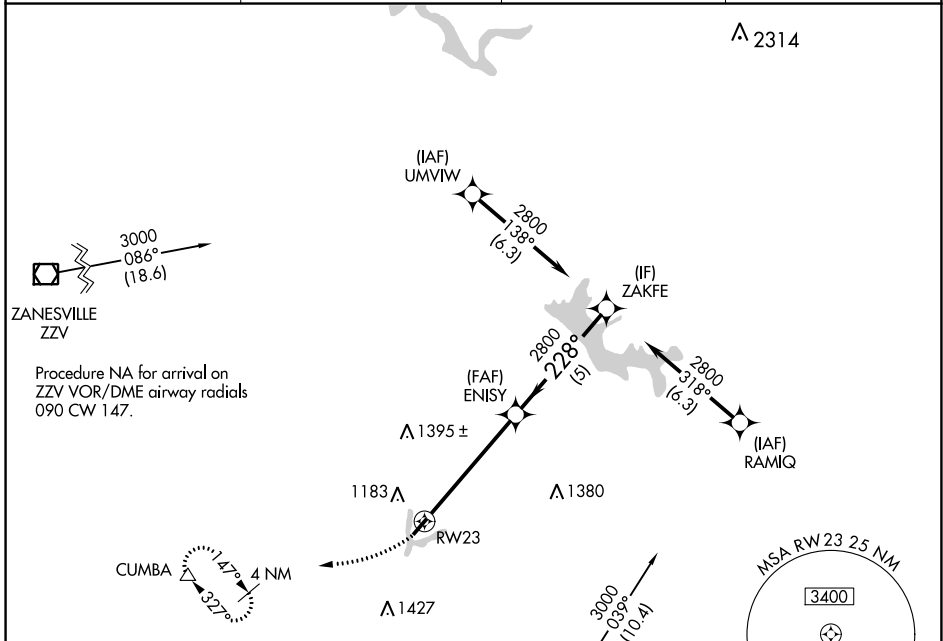
RNAV (GPS) RWY 23

NOBLE COUNTY (I10)

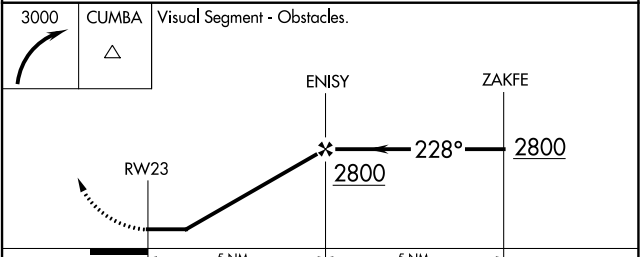
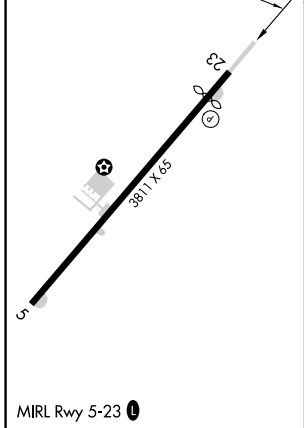
⚠ Rwy 23 helicopter visibility reduction below 1 SM NA.
⚠ DME/DME RNP-0.3 NA. Procedure NA at night. Use Zanesville altimeter setting; when not received, procedure NA.

MISSED APPROACH: Climbing right turn to 3000 direct to CUMBA and hold.

ZZV ASOS 114.95	INDIANAPOLIS CENTER 124.45 323.275	UNICOM 122.8 (CTAF)	122.7 0
---------------------------	--	-------------------------------	----------------



ELEV 879	TDZE 878
----------	----------



CATEGORY	A	B	C	D
LP MDA	1580-1	702 (800-1)	1580-2 702 (800-2)	NA
LNAV MDA	1620-1 742 (800-1)	1620-1¼ 742 (800-1¼)	1620-2 742 (800-2)	NA
C CIRCLING	1620-1	741 (800-1)	1660-2¼ 781 (800-2¼)	NA

EC-2, 05 SEP 2024 to 03 OCT 2024

EC-2, 05 SEP 2024 to 03 OCT 2024