

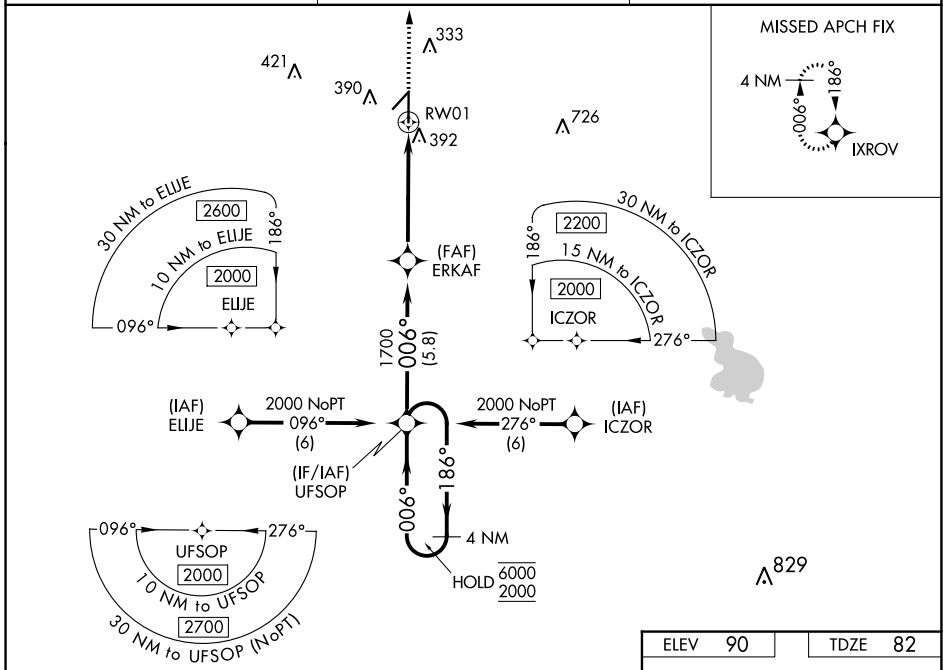
WAAS CH 69636 W01A	APP CRS 006°	Rwy Idg TDZE Apt Elev	6201 82 90
--	------------------------	-----------------------------	---------------------------------------

RNAV (GPS) RWY 1

ZEPHYRHILLS MUNI (ZPH)

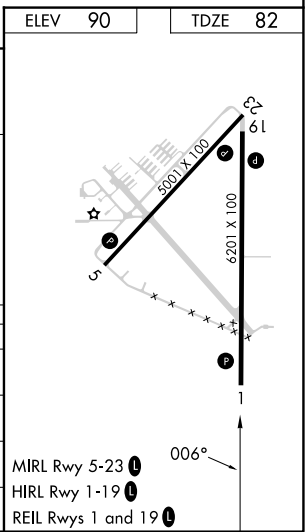
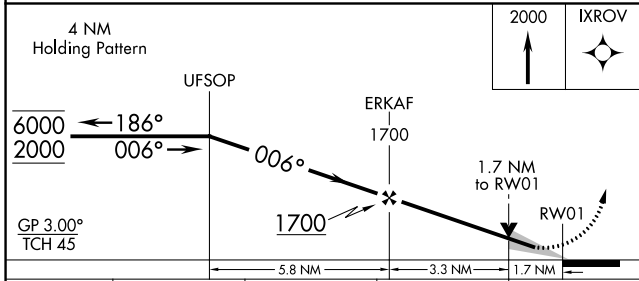
RNP APCH - GPS	MISSED APPROACH: Climb to 2000 direct IXROV and hold.
<p>▼ For uncompensated Baro-VNAV systems, LNAV/VNAV NA below -15°C or above 54°C.</p> <p>▲</p>	

AWOS-3PT 118.975	TAMPA APP CON 119.9 290.3	UNICOM 123.075 (CTAF) 1
----------------------------	-------------------------------------	--



SE-3, 05 SEP 2024 to 03 OCT 2024

SE-3, 05 SEP 2024 to 03 OCT 2024



CATEGORY	A	B	C	D
LPV DA		332- ⁷ / ₈	250 (300- ⁷ / ₈)	
LNAV/VNAV DA		553-1 ³ / ₈	471 (500-1 ³ / ₈)	
LNAV MDA	660-1	578 (600-1)	660-1 ⁵ / ₈	578 (600-1 ⁵ / ₈)
C CIRCLING	700-1	610 (700-1)	700-1 ³ / ₄ 610 (700-1 ³ / ₄)	780-2 ¹ / ₄ 690 (700-2 ¹ / ₄)