

WAAS CH <b>78436</b> <b>W19A</b>	APP CRS <b>186°</b>	Rwy Idg TDZE Apt Elev	<b>6201</b> <b>90</b> <b>90</b>
--	------------------------	-----------------------------	---------------------------------------

# RNAV (GPS) RWY 19

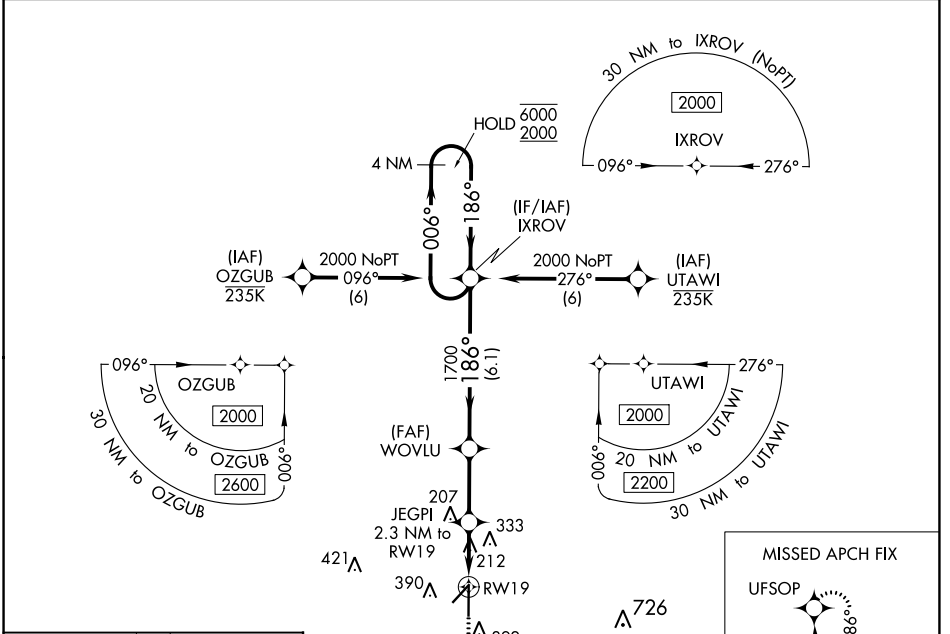
ZEPHYRHILLS MUNI (ZPH)

RNP APCH.

▼ For uncompensated Baro-VNAV systems, LNAV/VNAV NA below -15°C or above 54°C.

MISSED APPROACH: Climb to 2000 direct UFSOP and hold.

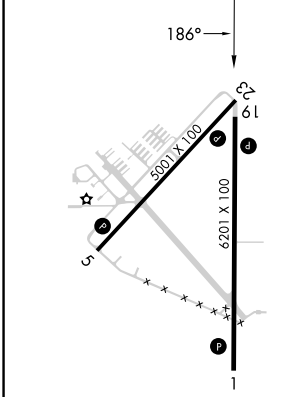
AWOS-3PT <b>118.975</b>	TAMPA APP CON <b>119.9 290.3</b>	UNICOM <b>123.075 (CTAF) 0</b>
----------------------------	-------------------------------------	-----------------------------------



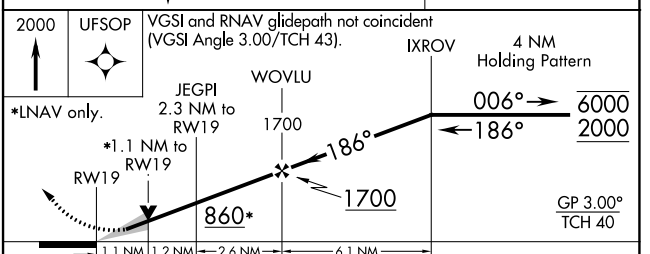
SE-3, 05 SEP 2024 to 03 OCT 2024

SE-3, 05 SEP 2024 to 03 OCT 2024

ELEV 90	TDZE 90
---------	---------



- MIRL Rwy 5-23
- HIRL Rwy 1-19
- REIL Rws 1 and 19



CATEGORY	A	B	C	D
LPV DA		340-7/8	250 (300-7/8)	
LNAV/VNAV DA		380-1	290 (300-1)	
LNAV MDA	480-1	390 (400-1)	480-1 1/8	390 (400-1 1/8)
<input checked="" type="checkbox"/> CIRCLING	740-1	650 (700-1)	740-1 3/4	740-2
			650 (700-1 3/4)	650 (700-2)