

WAAS CH <b>86238</b> <b>W05A</b>	APP CRS <b>049°</b>	Rwy ldg TDZE Apt Elev	<b>5001</b> <b>85</b> <b>90</b>
--	------------------------	-----------------------------	---------------------------------------

# RNAV (GPS) RWY 5

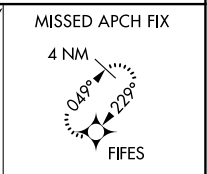
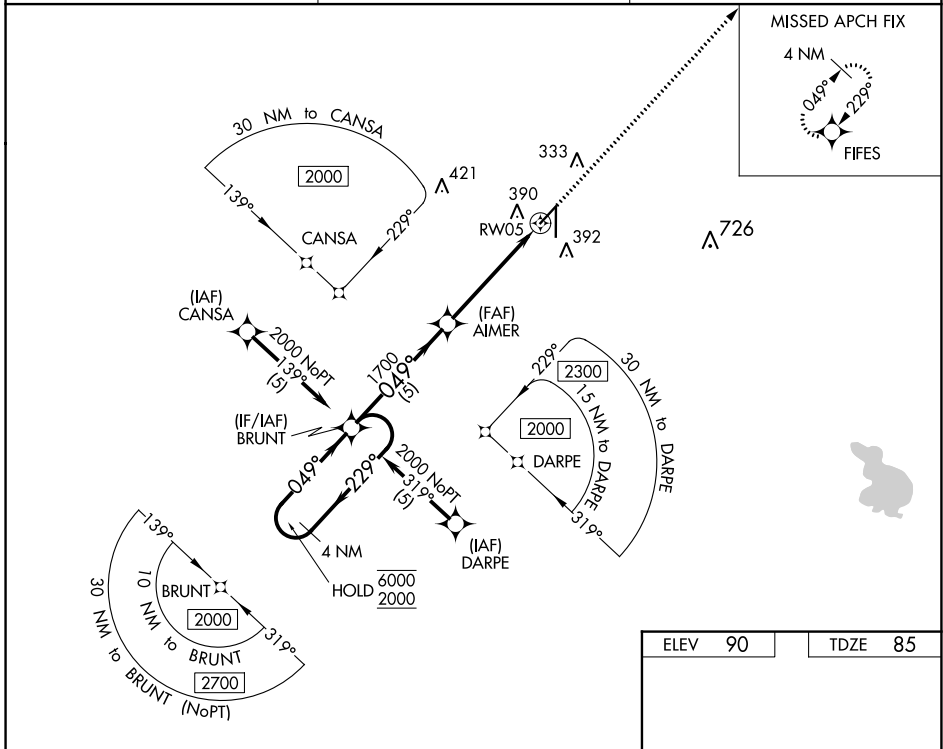
ZEPHYRHILLS MUNI (ZPH)

RNP APCH.

**⚠** Rwy 5 helicopter visibility reduction below  $\frac{3}{4}$  SM NA.  
For uncompensated Baro-VNAV systems, LNAV/VNAV NA below -15°C or above 54°C.

MISSED APPROACH: Climb to 2000 direct FIFES and hold.

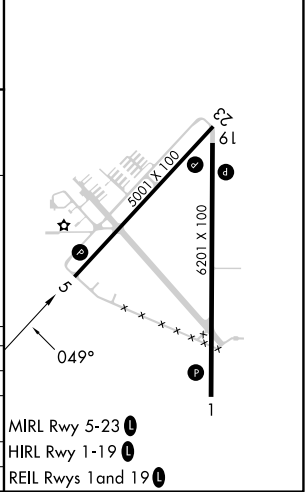
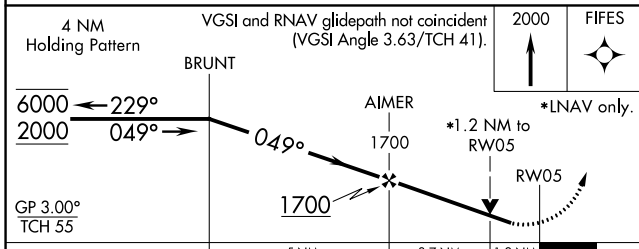
AWOS-3PT <b>118.975</b>	TAMPA APP CON <b>119.9 290.3</b>	UNICOM <b>123.075 (CTAF) 0</b>
----------------------------	-------------------------------------	-----------------------------------



SE-3, 05 SEP 2024 to 03 OCT 2024

SE-3, 05 SEP 2024 to 03 OCT 2024

ELEV 90	TDZE 85
---------	---------



CATEGORY	A	B	C	D
LPV DA	373-1	288 (300-1)		NA
LNAV/VNAV DA	582-1 $\frac{1}{8}$	497 (500-1 $\frac{1}{8}$ )		NA
LNAV MDA	600-1	515 (600-1)		NA
<b>C</b> CIRCLING	740-1	650 (700-1)		NA