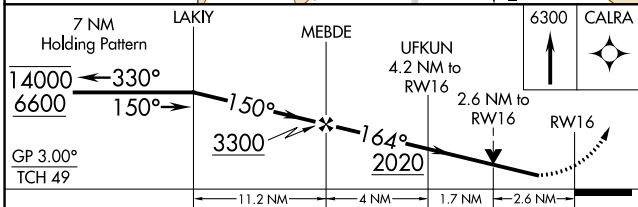
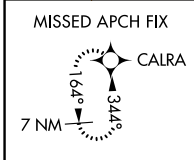
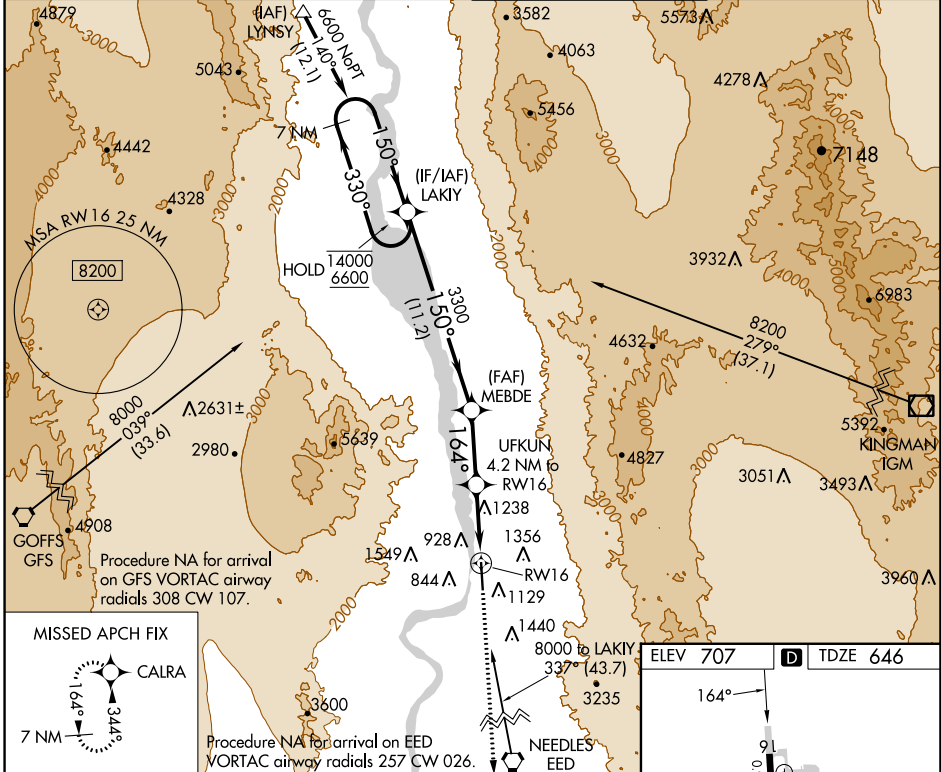


WAAS CH 82624 W16A	APP CRS 164°	Rwy Idg TDZE Apt Elev	8500 646 707
--	------------------------	-----------------------------	---

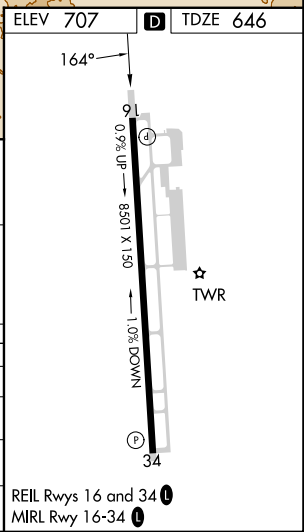
RNAV (GPS) RWY 16

LAUGHLIN/BULLHEAD INTL (IFP)

RNP APCH - GPS.		MISSED APPROACH: Climb to 6300 direct CALRA and hold, continue climb-in-hold to 6300.	
ATIS* 119.825	LOS ANGELES CENTER 134.65 360.65	BULLHEAD TOWER* 123.9 (CTAF) 0	GND CON 118.25



CATEGORY	A	B	C	D
LPV DA		1048-1 1/8	402 (400-1 1/8)	
LNAV/VNAV DA		1500-2 1/2	854 (800-2 1/2)	
LNAV MDA	1500-1 854 (800-1)	1500-1 1/4 854 (800-1 1/4)	1500-2 1/2	854 (800-2 1/2)
CIRCLING	1500-1 793 (800-1)	1560-1 1/4 853 (900-1 1/4)	1800-3 1093 (1100-3)	2340-3 1633 (1700-3)



SW-4, 05 SEP 2024 to 03 OCT 2024

SW-4, 05 SEP 2024 to 03 OCT 2024