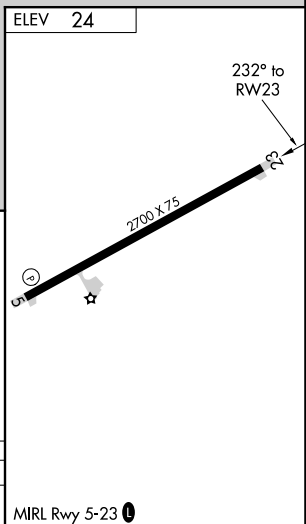
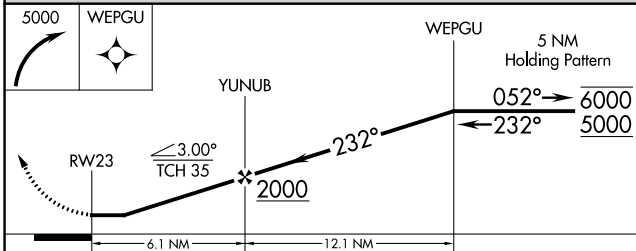
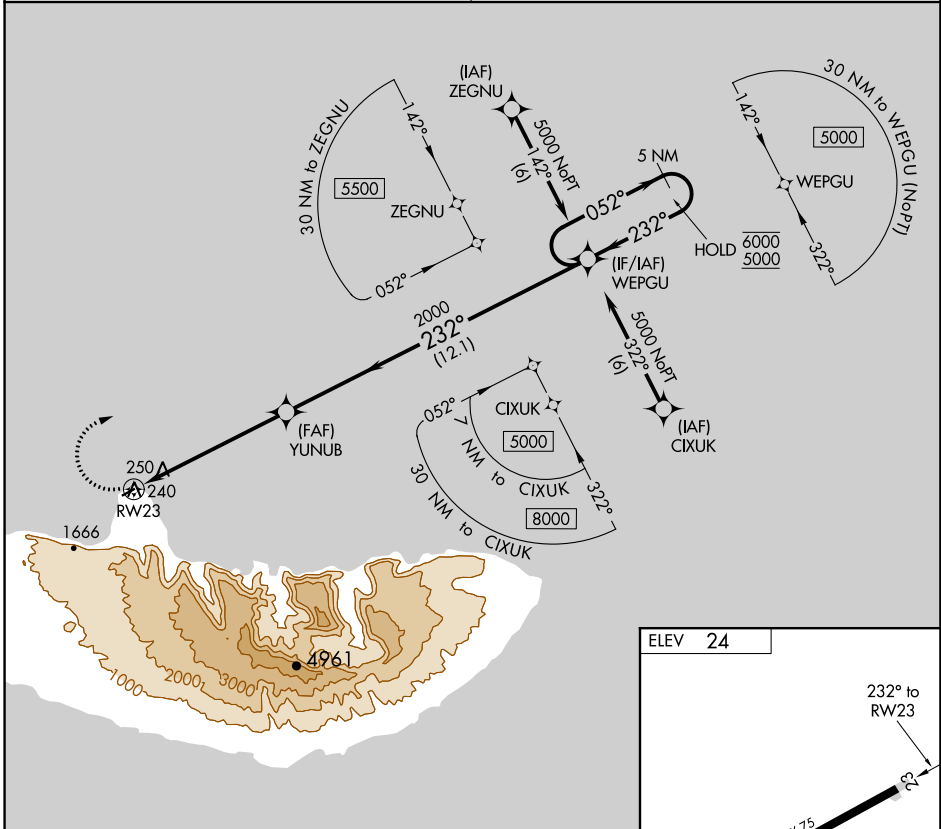


APP CRS	Rwy Idg	N/A
<b>232°</b>	TDZE	N/A
	Apt Elev	24

# RNAV (GPS)-A

KALAUPAPA (LUP) (PHLU)

RNP APCH.	MISSED APPROACH: Climbing right turn to 5000 direct WEPGU and hold, continue climb-in-hold to 5000.
<p><b>▼</b> Circling NA southeast of Rwy 5-23.</p> <p><b>▲ NA</b> Procedure NA at night.</p> <p>Use Kaunakakai altimeter setting.</p>	
HCF CENTER <b>124.1 317.5</b>	CTAF <b>122.9</b>



CATEGORY	A	B	C	D
<b>C</b> CIRCLING	660-1	636 (700-1)	NA	NA

MIRL Rwy 5-23

PAC, 05 SEP 2024 to 31 OCT 2024

PAC, 05 SEP 2024 to 31 OCT 2024