

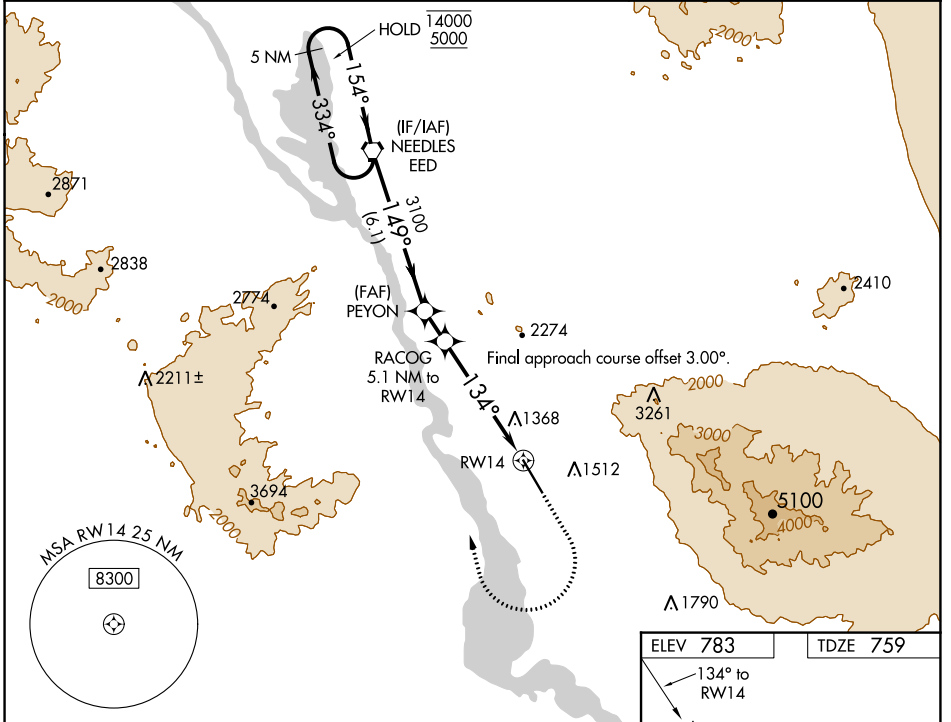
WAAS CH <b>53330</b> <b>W14A</b>	APP CRS <b>134°</b>	Rwy Idg TDZE Apt Elev	<b>8000</b> <b>759</b> <b>783</b>
--	------------------------	-----------------------------	---

# RNAV (GPS) RWY 14

LAKE HAVASU CITY (HII)

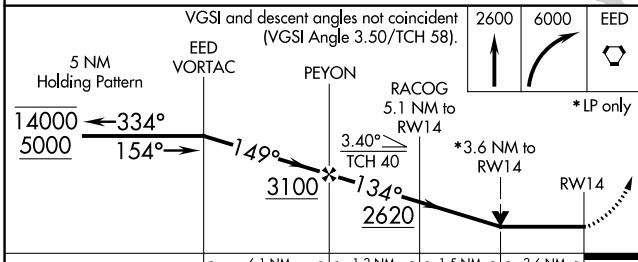
RNP APCH.	MISSED APPROACH: (Do not exceed 240K until EED VORTAC) Climb to 2600 then climbing right turn to 6000 direct EED VORTAC and hold, continue climb-in-hold to 6000.
<p>▼ Circling NA northeast of Rwy 14-32.</p> <p>▲ Rwy 14 helicopter visibility reduction below 3/4 SM NA.</p>	

AWOS-3 <b>119.025</b>	LOS ANGELES CENTER <b>134.65 360.65</b>	UNICOM <b>122.7 (CTAF) 0</b>
--------------------------	--	---------------------------------



SW-4, 05 SEP 2024 to 03 OCT 2024

SW-4, 05 SEP 2024 to 03 OCT 2024



ELEV 783	TDZE 759
----------	----------

REIL Rwy 14 and 32 0

MIRL Rwy 14-32 0

CATEGORY	A	B	C	D
LP MDA	2140-1 1/4 1381 (1400-1 1/4)	2140-1 1/2 1381 (1400-1 1/2)	2140-3	1381 (1400-3)
RNAV MDA	2320-1 1/4 1561 (1600-1 1/4)	2320-1 1/2 1561 (1600-1 1/2)	2320-3	1561 (1600-3)
CIRCLING	2320-1 1/4 1537 (1600-1 1/4)	2320-1 1/2 1537 (1600-1 1/2)	2320-3	1537 (1600-3)