

| | | | |
|---|------------------------|-----------------------------|---|
| WAAS CH 69643 W 16A | APP CRS 166° | Rwy Idg TDZE Apt Elev | 7025 6188 6221 |
|---|------------------------|-----------------------------|---|

RNAV (GPS) RWY 16

AFTON MUNI (AFO)

RNP APCH - GPS.

⚠ Rwy 16 helicopter visibility reduction below ¾ SM NA. When Afton altimeter setting not received, procedure NA.

⚠ MISSED APPROACH: (Do not exceed 210K until GIGSE) Climb to 7400 then climbing right turn to 13300 direct GIGSE and hold.

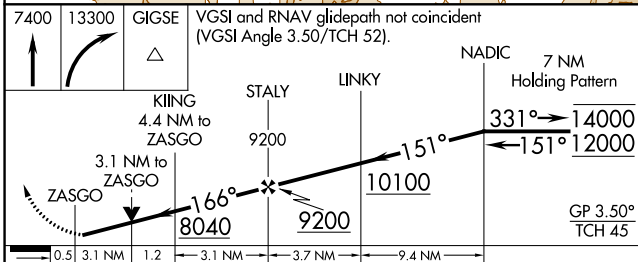
Missed approach requires minimum climb of 420 feet per NM to 9000.

***** Missed approach requires minimum climb of 400 feet per NM to 9000.

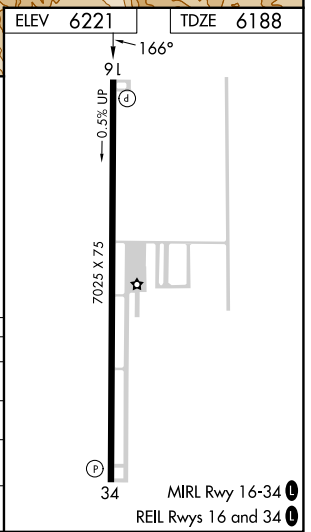
| | | |
|---------------------------|--|-------------------------------|
| AWOS-3P 119.025 | SALT LAKE CENTER 128.35 239.25 | UNICOM 122.8 (CTAF) |
|---------------------------|--|-------------------------------|



| | |
|-----------|-----------|
| ELEV 6221 | TDZE 6188 |
|-----------|-----------|



| CATEGORY | A | B | C | D |
|-----------|---------------------------|---------------------------|-------------------------|----|
| LPV DA* | 6485-1 297 (300-1) | | | NA |
| LPV DA | 7110-2½ 922 (900-2½) | | | NA |
| LNAV MDA# | 7600-1¼ 1412 (1400-1¼) | 7600-1½ 1412 (1400-1½) | 7600-3 1412 (1400-3) | NA |
| LNAV MDA | 7800-1¼ 1612 (1600-1¼) | 7800-1½ 1612 (1600-1½) | 7800-3 1612 (1600-3) | NA |



NW-1, 05 SEP 2024 to 03 OCT 2024

NW-1, 05 SEP 2024 to 03 OCT 2024