

RNAV (GPS) RWY 34

AFTON MUNI (AFO)

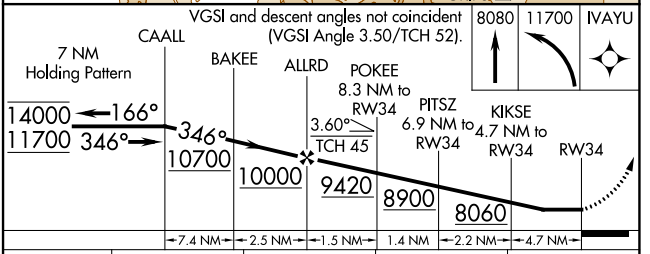
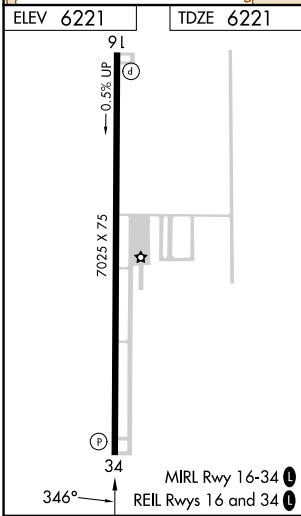
APP CRS 346°	Rwy Idg TDZE Apt Elev	7025 6221 6221
------------------------	-----------------------------	---

RNP APCH - GPS.

▽ Circling NA east of Rwy 16-34. Procedure NA at night.
⚠ NA Rwy 34 helicopter visibility reduction below 1 SM NA.
❄ -18°C When Afton altimeter setting not received, procedure NA.

MISSED APPROACH: (Do not exceed 200K until IVAYU)
 Climb to 8080 then climbing left turn to 11700 direct IVAYU and hold.
 *Missed approach requires minimum climb of 364 feet per NM to 8900.

AWOS-3P 119.025	SALT LAKE CENTER 128.35 239.25	UNICOM 122.8 (CTAF)
---------------------------	--	-------------------------------



CATEGORY	A	B	C	D
LNAV MDA*	7520-1¼ 1299 (1300-1¼)	7520-1½ 1299 (1300-1½)	7520-3 1299 (1300-3)	NA
LNAV MDA	7800-1¼ 1579 (1600-1¼)	7800-1½ 1579 (1600-1½)	7800-3 1579 (1600-3)	NA
☑ CIRCLING	7800-1¼ 1579 (1600-1¼)	7800-1½ 1579 (1600-1½)	7800-3 1579 (1600-3)	NA

NW-1, 05 SEP 2024 to 03 OCT 2024

NW-1, 05 SEP 2024 to 03 OCT 2024