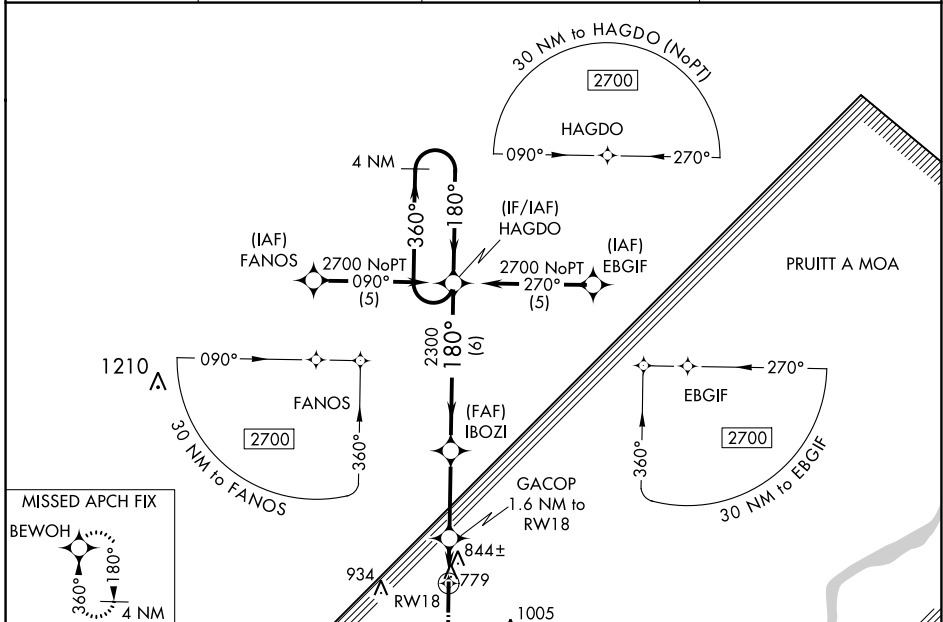


WAAS CH 45912 W18A	APP CRS 180°	Rwy Idg TDZE Apt Elev	5905 734 734
--	------------------------	-----------------------------	---

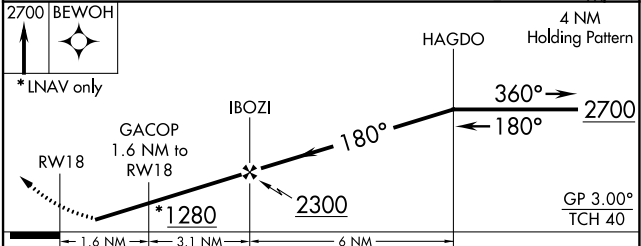
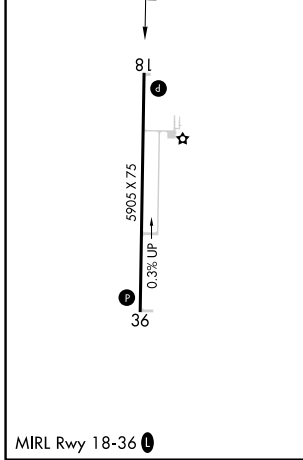
RNAV (GPS) RWY 18

MOUNT STERLING MUNI (I63)

RNP APCH.		<p>Baro-VNAV NA. Rwy 18 helicopter visibility reduction below $\frac{3}{4}$ SM NA. When local altimeter setting not received, use Quincy altimeter setting: increase Circling Cat C and D MDA 60 feet and visibility Circling Cat C and D $\frac{1}{4}$ SM.</p>		<p>MISSED APPROACH: Climb to 2700 direct BEWOH and hold.</p>	
AWOS-3PT 118.325	UIN ASOS 121.425	KANSAS CITY CENTER 126.225 317.775		UNICOM 122.8 (CTAF) 0	



ELEV 734	TDZE 734
----------	----------



CATEGORY	A	B	C	D
LPV DA		1066-1 $\frac{1}{4}$	332 (400-1 $\frac{1}{4}$)	
LNAV/VNAV DA		1191-1 $\frac{3}{4}$	457 (500-1 $\frac{3}{4}$)	
LNAV MDA	1160-1	426 (500-1)	1160-1 $\frac{1}{4}$	426 (500-1 $\frac{1}{4}$)
CIRCLING	1200-1	466 (500-1)	1360-1 $\frac{3}{4}$ 626 (700-1 $\frac{3}{4}$)	1360-2 626 (700-2)

EC-3, 05 SEP 2024 to 03 OCT 2024

EC-3, 05 SEP 2024 to 03 OCT 2024