

WAAS CH 72916 W14A	APP CRS 137°	Rwy Idg TDZE Apt Elev	5006 1157 1162
--	------------------------	-----------------------------	---

RNAV (GPS) RWY 14

BEDFORD COUNTY (HMIZ)

RNP APCH.

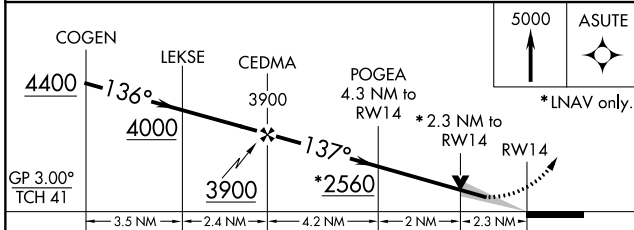
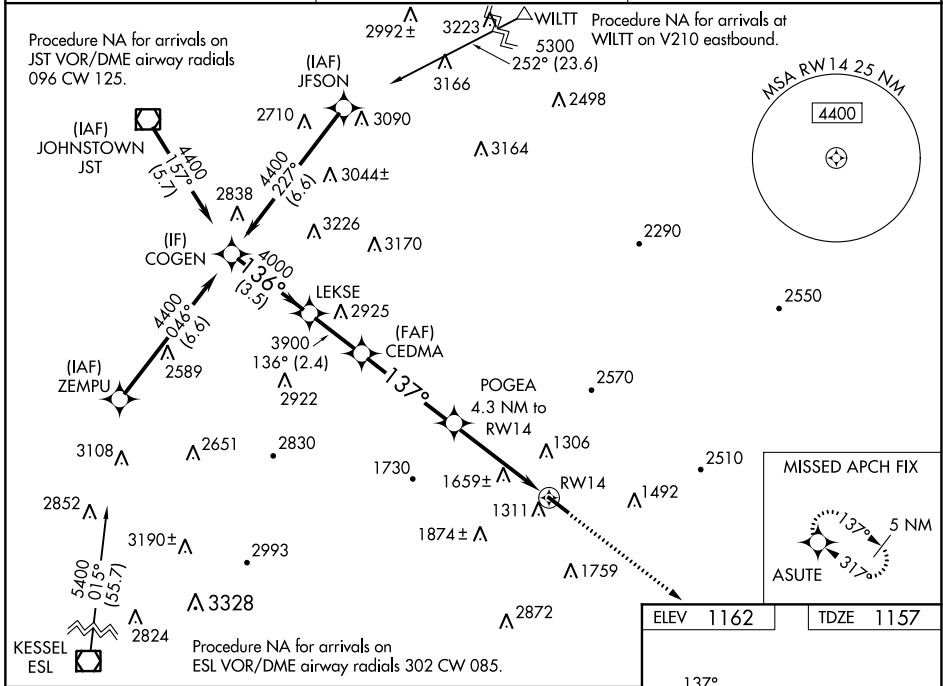
⚠ For uncompensated Baro-VNAV systems, LNAV/VNAV NA below -17°C or above 54°C.

MISSED APPROACH: Climb to 5000 direct ASUTE and hold, continue climb-in-hold to 5000.

AWOS-3
123.675

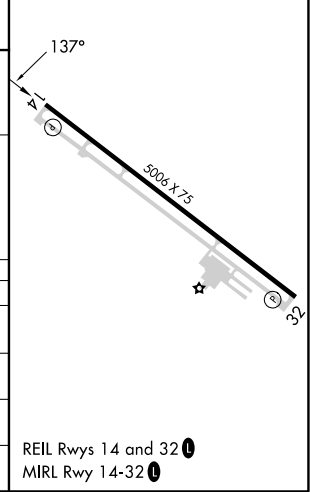
JOHNSTOWN APP CON *
121.2 299.2

UNICOM
122.7 (CTAF) 0



ELEV 1162	TDZE 1157
-----------	-----------

CATEGORY	A	B	C	D
LPV DA	1640-1½		483 (500-1½)	
LNAV/VNAV DA	2050-4		893 (900-4)	
LNAV MDA	1920-1 763 (800-1)	1920-1¼ 763 (800-1¼)	1920-2½	763 (800-2½)
CIRCLING	1920-1 758 (800-1)	1960-1¼ 798 (800-1¼)	2200-3 1038 (1100-3)	2940-3 1778 (1800-3)



NE-4, 05 SEP 2024 to 03 OCT 2024

NE-4, 05 SEP 2024 to 03 OCT 2024