

WAAS CH 90437 W32A	APP CRS 317°	Rwy Idg TDZE Apt Elev	5006 1162 1162
--	------------------------	-----------------------------	---

RNAV (GPS) RWY 32

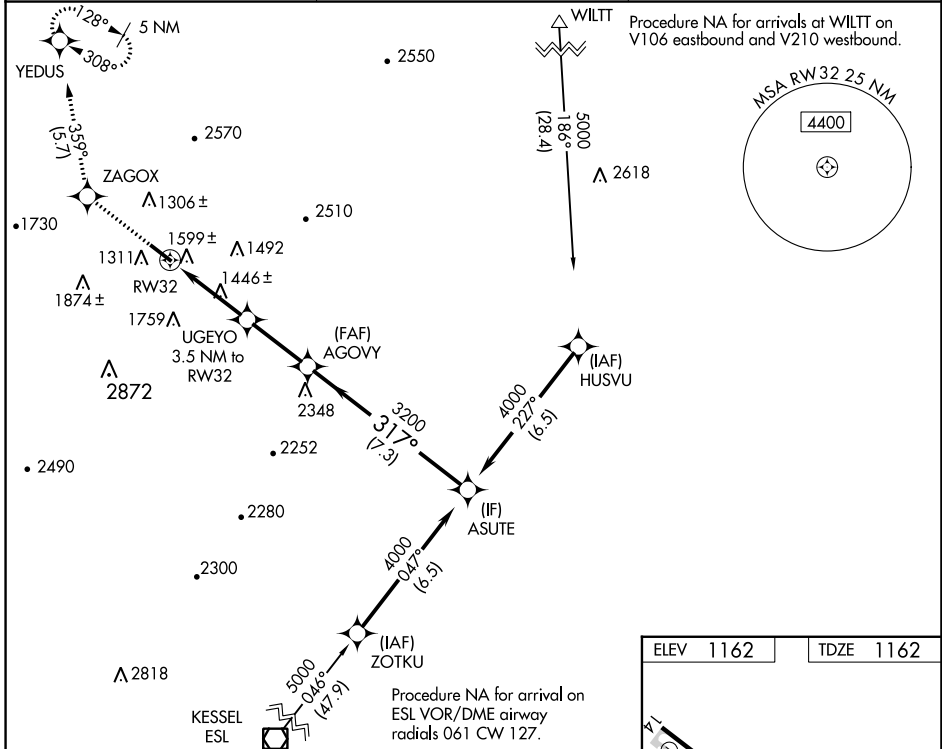
BEDFORD COUNTY (HMZ)

RNP APCH - GPS.

▼ Rwy 32 helicopter visibility reduction below $\frac{3}{4}$ SM NA. VDP NA when using Altoona altimeter setting. When local altimeter setting not received, use Altoona altimeter setting and increase all MDA 100 feet, increase LP Cat C visibility $\frac{1}{4}$ SM, increase LNAV Cat B visibility $\frac{1}{4}$ SM and Cat C visibility $\frac{1}{2}$ SM, and increase Circling Cats A and B visibility $\frac{1}{4}$ SM.

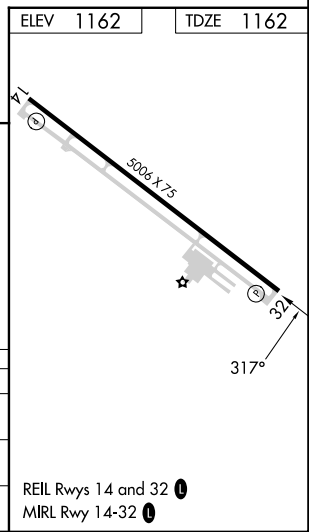
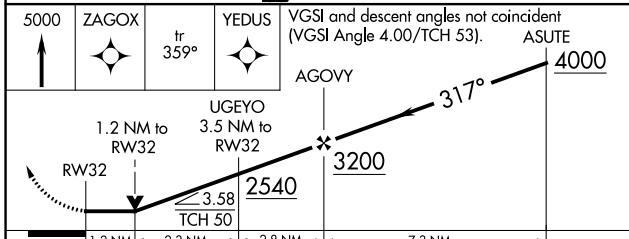
▲ MISSED APPROACH: Climb to 5000 direct ZAGOX and on track 359° to YEDUS and hold, continue climb-in-hold to 5000.

AWOS-3 123.675	JOHNSTOWN APP CON * 121.2 299.2	UNICOM 122.7 (CTAF)
--------------------------	---	-------------------------------



NE-4, 05 SEP 2024 to 03 OCT 2024

NE-4, 05 SEP 2024 to 03 OCT 2024



CATEGORY	A	B	C	D
LP MDA	1740-1	578 (600-1)	1740-1½ 578 (600-1½)	NA
LNAV MDA	1860-1	698 (700-1)	1860-2 698 (700-2)	NA
CIRCLING	1900-1 738 (800-1)	1960-1 798 (800-1)	2200-3 1038 (1100-3)	NA