

WAAS CH 56639 W11A	APP CRS 114°	Rwy ldg 2714 TDZE 15 Apt Elev 15
--	------------------------	---

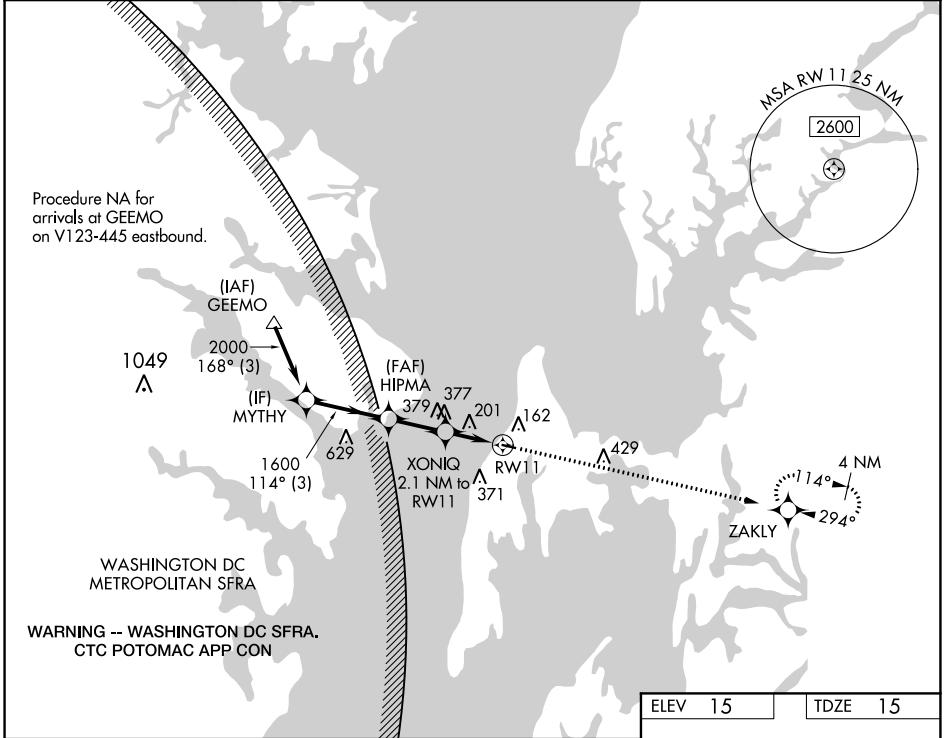
RNAV (GPS) RWY 11

BAY BRIDGE (W29)

RNP APCH. MISSED APPROACH: Climb to 2100 direct ZAKLY and hold.

For uncompensated Baro-VNAV systems, LNAV/VNAV NA below -15°C or above 54°C.

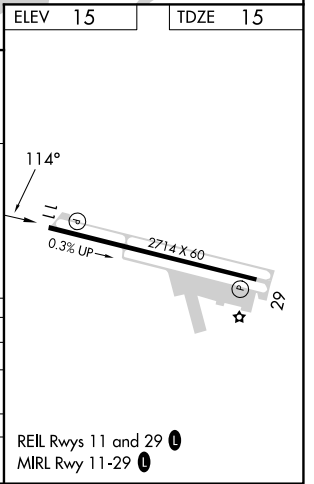
AWOS-3 120.575	POTOMAC APP CON 119.0 282.275	UNICOM 122.725 (CTAF) 0
--------------------------	---	-----------------------------------



NE-3, 05 SEP 2024 to 03 OCT 2024

NE-3, 05 SEP 2024 to 03 OCT 2024

ELEV 15		TDZE 15	
VGSi and RNAV glidepath not coincident (VGSi Angle 3.00/TCH 30). MYTHY 2000 114° 1600 HIPMA 1600 XONIQ 2.1 NM to RW11 *820 *1.3 NM to RW11 RW11 GP 3.50° TCH 40 *LNAV only.			
CATEGORY	A	B	C D
LPV DA	265-1	250 (300-1)	NA
LNAV/VNAV DA	489-1 3/8	474 (500-1 3/8)	NA
LNAV MDA	460-1	445 (500-1)	NA
CIRCLING	500-1 485 (500-1)	800-1 785 (800-1)	NA



REIL Rwy 11 and 29 0
MIRL Rwy 11-29 0