

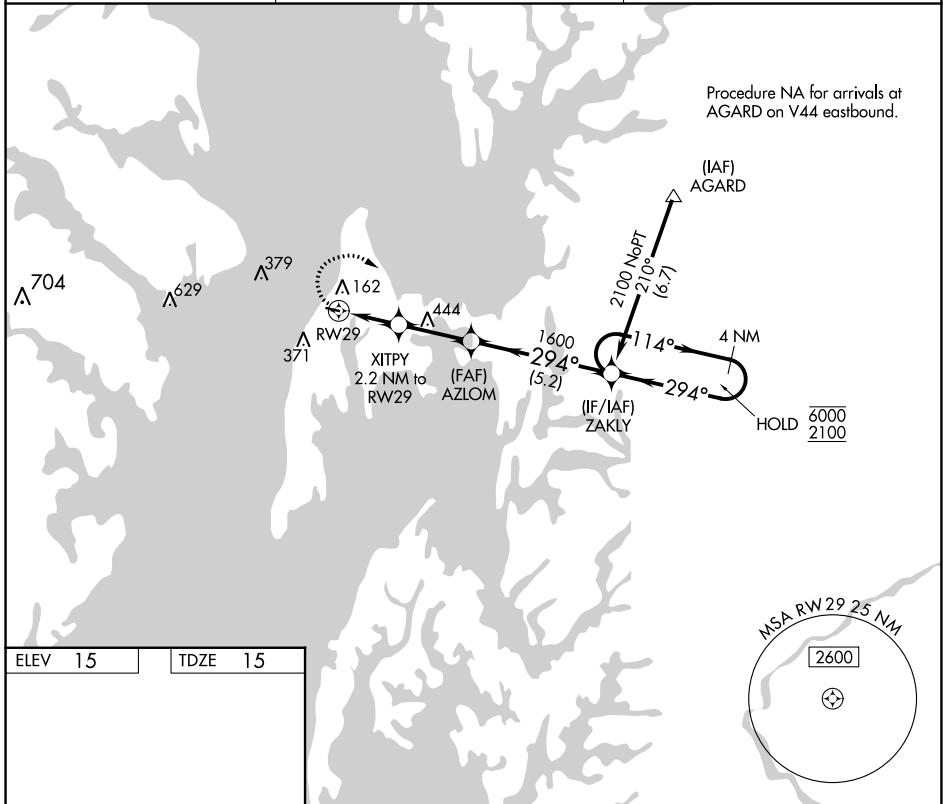
APP CRS	Rwy Idg	<b>2714</b>
<b>294°</b>	TDZE	<b>15</b>
	Apt Elev	<b>15</b>

# RNAV (GPS) RWY 29

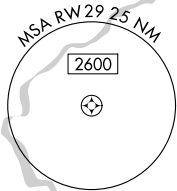
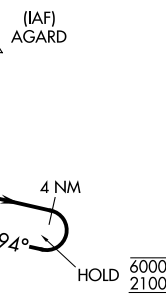
BAY BRIDGE (W29)

RNP APCH.	MISSED APPROACH: Climbing right turn to 2100 direct ZAKLY and hold.
<p><b>⚠</b> Rwy 29 helicopter visibility reduction below 1 SM NA.</p>	

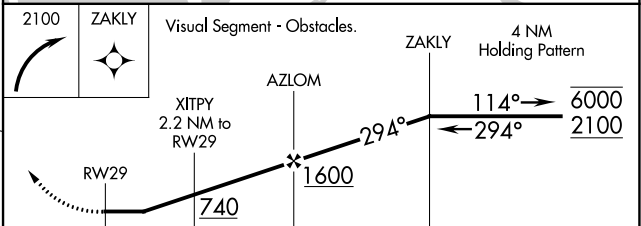
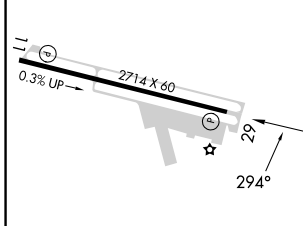
AWOS-3 <b>120.575</b>	POTOMAC APP CON <b>119.0 282.275</b>	UNICOM <b>122.725 (CTAF) 0</b>
--------------------------	---	-----------------------------------



Procedure NA for arrivals at AGARD on V44 eastbound.



ELEV 15	TDZE 15
---------	---------



CATEGORY	A	B	C	D
LNAV MDA	480-1	465 (500-1)	NA	
<b>C</b> CIRCLING	500-1 485 (500-1)	800-1 785 (800-1)	NA	

REIL Rws 11 and 29 **0**  
MIRL Rwy 11-29 **0**

NE-3, 05 SEP 2024 to 03 OCT 2024

NE-3, 05 SEP 2024 to 03 OCT 2024