

# NASCR FOUR ARRIVAL

CONCORD, NORTH CAROLINA

CHARLOTTE APP CON  
128.325  
CLT D-ATIS ARR  
121.15  
JGF ATIS ★  
133.675

ROANOKE  
109.4 ROA ---  
Chan 31

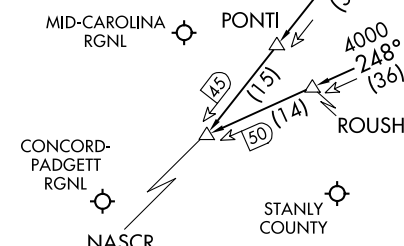
LYNCHBURG  
109.2 LYH ---  
Chan 29

HENBY  
VERTICAL NAVIGATION  
PLANNING INFORMATION  
Turbojets: Expect 12000  
Props: Expect 11000

NOTE: LIB TRANSITION: Props 12000.  
NOTE: ARGAL TRANSITION - Props only.  
NOTE: RADAR required.  
NOTE: DME required.

GREENSBORO  
116.2 GSO ---  
Chan 109

TAR RIVER  
117.8 TYI ---  
Chan 125



NASCR  
VERTICAL NAVIGATION  
PLANNING INFORMATION  
Expect 4000  
or as assigned by ATC.

RALEIGH-DURHAM  
117.2 RDU ---  
Chan 119

LIBERTY  
113.0 LIB ---  
Chan 77

NOTE: Chart not to scale.

## ARRIVAL DESCRIPTION

ARGAL TRANSITION (ARGAL.NASCR4): From over ARGAL INT on GSO R-088 to GSO VORTAC then on GSO R-221 to NASCR INT. Thence. . . .

LIBERTY TRANSITION (LIB.NASCR4): From over LIB VORTAC on LIB R-248 to NASCR INT. Thence. . . .

LYNCHBURG TRANSITION (LYH.NASCR4): From over LYH VORTAC on LYH R-235 to HENBY INT then on GSO R-360 to GSO VORTAC then on GSO R-221 to NASCR INT. Thence. . . .

. . . .from over NASCR INT. Expect RADAR vectors to final approach course.

SE-2, 05 SEP 2024 to 03 OCT 2024

SE-2, 05 SEP 2024 to 03 OCT 2024