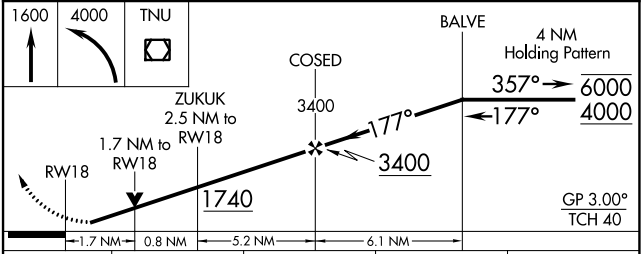
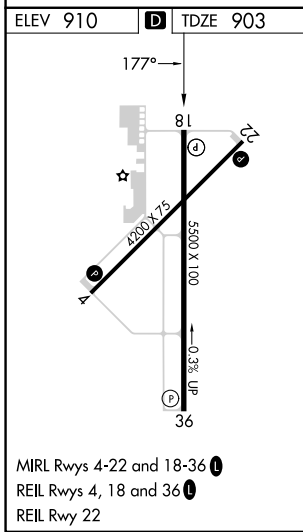
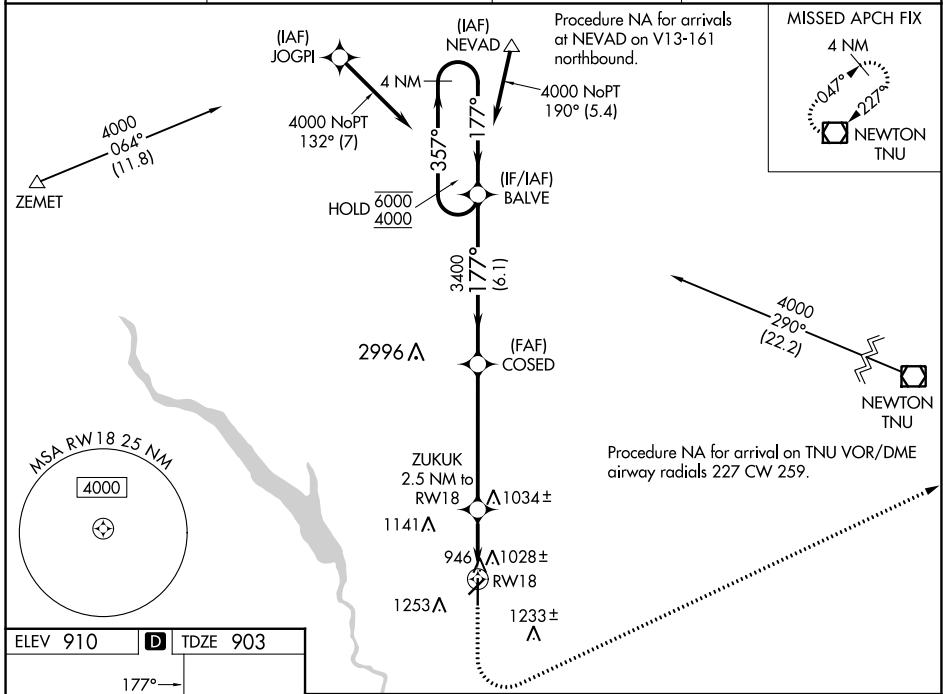


WAAS CH <b>82720</b> W18A	APP CRS <b>177°</b>	Rwy Idg <b>5500</b> TDZE <b>903</b> Apt Elev <b>910</b>
---------------------------------	------------------------	---

# RNAV (GPS) RWY 18

ANKENY RGNL (IKV)

RNP APCH - GPS.		MISSED APPROACH: Climb to 1600 then climbing left turn to 4000 direct TNU VOR/DME and hold.	
AWOS-3 <b>119.175</b>	DES MOINES APP CON <b>123.9 307.15</b>	CLNC DEL <b>126.65</b>	UNICOM <b>122.9 (CTAF)</b>



CATEGORY	A	B	C	D
LPV DA		1153- <sup>3</sup> / <sub>4</sub>	250 (300- <sup>3</sup> / <sub>4</sub> )	
LNAV/VNAV DA		1354-1 <sup>3</sup> / <sub>8</sub>	451 (500-1 <sup>3</sup> / <sub>8</sub> )	
LNAV MDA	1480-1	577 (600-1)	1480-1 <sup>5</sup> / <sub>8</sub>	577 (600-1 <sup>5</sup> / <sub>8</sub> )
CIRCLING	1560-1	650 (700-1)	1560-1 <sup>3</sup> / <sub>4</sub>	1760-2 <sup>3</sup> / <sub>4</sub> 850 (900-2 <sup>3</sup> / <sub>4</sub> )

NC-3, 05 SEP 2024 to 03 OCT 2024

NC-3, 05 SEP 2024 to 03 OCT 2024