

WAAS CH <b>86722</b> <b>W36A</b>	APP CRS <b>357°</b>	Rwy Idg TDZE Apt Elev	<b>6002</b> <b>317</b> <b>317</b>
--	------------------------	-----------------------------	---

# RNAV (GPS) RWY 36

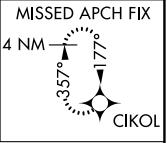
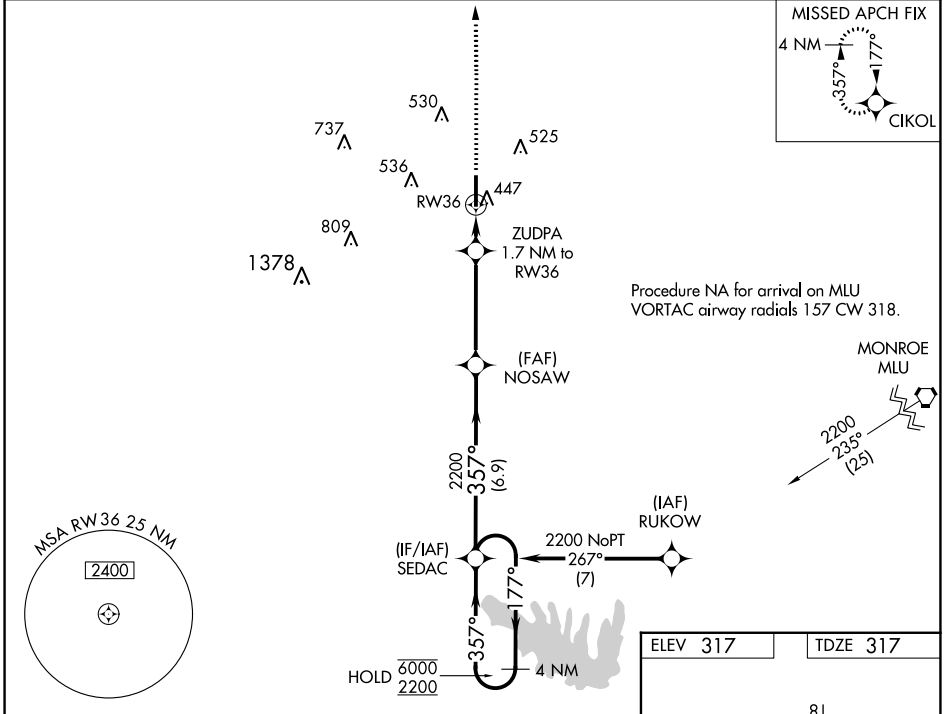
RUSTON RGNL (RSN)

RNP APCH - GPS.

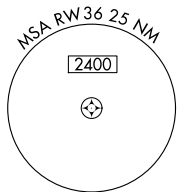
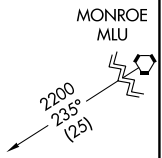
**▼** Rwy 36 helicopter visibility reduction below 3/4 SM NA.  
**▲** For uncompensated Baro-VNAV systems, LNAV/VNAV NA below -15°C or above 54°C.

MISSED APPROACH: Climb to 2000 direct CIKOL and hold.

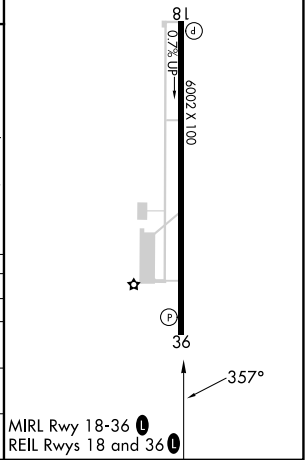
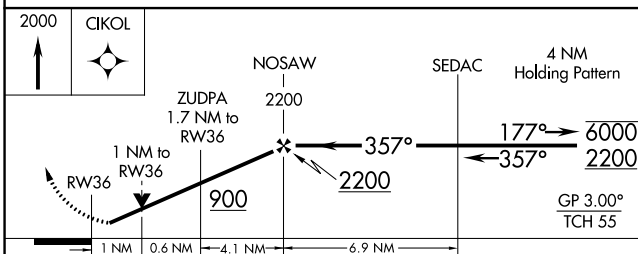
AWOS-3PT <b>119.525</b>	MONROE APP CON * <b>126.9 307.9</b>	CLNC DEL <b>118.8</b>	UNICOM <b>122.7 (CTAF) 0</b>
----------------------------	--	--------------------------	---------------------------------



Procedure NA for arrival on MLU  
VORTAC airway radials 157 CW 318.



ELEV 317	TDZE 317
----------	----------



CATEGORY	A	B	C	D
LPV DA		602-3/4	285 (300-3/4)	
LNAV/VNAV DA		628-3/4	311 (400-3/4)	
LNAV MDA	700-3/4	383 (400-3/4)	700-1	383 (400-1)
CIRCLING	760-1 443 (500-1)	780-1 463 (500-1)	900-1 1/2 583 (600-1 1/2)	960-2 643 (700-2)

MIRL Rwy 18-36 0  
REIL Rwy 18 and 36 0

SC-4, 05 SEP 2024 to 03 OCT 2024

SC-4, 05 SEP 2024 to 03 OCT 2024