

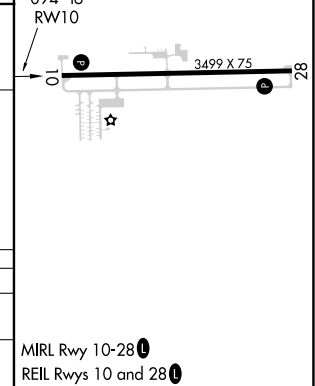
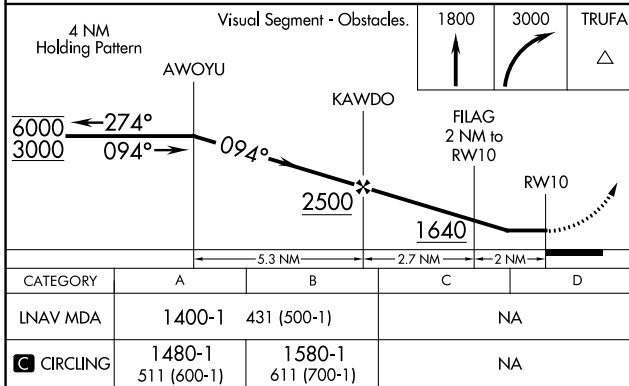
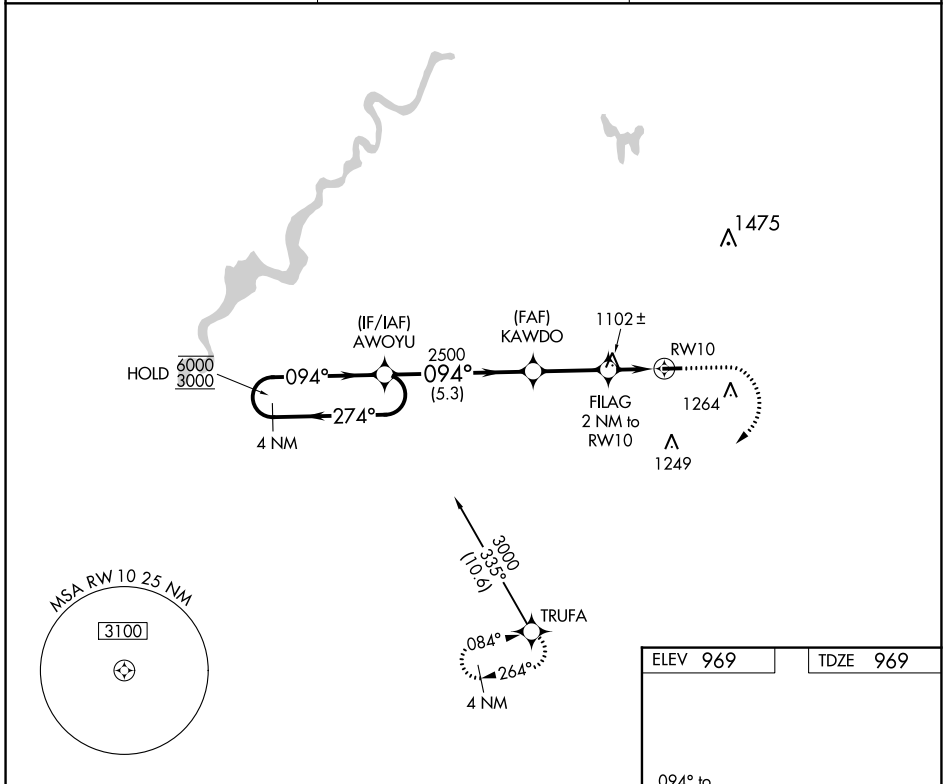
APP CRS	Rwy Idg	<b>3499</b>
<b>094°</b>	TDZE	<b>969</b>
	Apt Elev	<b>969</b>

# RNAV (GPS) RWY 10

LAKEVIEW/GRIFFITH FLD (13C)

RNP APCH.	Procedure NA at night. Rwy 10 helicopter visibility reduction below 1 SM NA. Use Big Rapids altimeter setting.	MISSED APPROACH: Climb to 1800 then climbing right turn to 3000 direct TRUFA and hold.
⚠ NA		

RQB AWOS-3P <b>125.875</b>	GREAT LAKES APP CON * <b>124.6 257.6</b>	UNICOM <b>122.8 (CTAF)</b>
-------------------------------	---	-------------------------------



CATEGORY	A	B	C	D
LNVA MDA	1400-1	431 (500-1)	NA	
CIRCLING	1480-1 511 (600-1)	1580-1 611 (700-1)	NA	

MIRL Rwy 10-28  
REIL Rwsy 10 and 28

EC-1, 05 SEP 2024 to 03 OCT 2024

EC-1, 05 SEP 2024 to 03 OCT 2024