

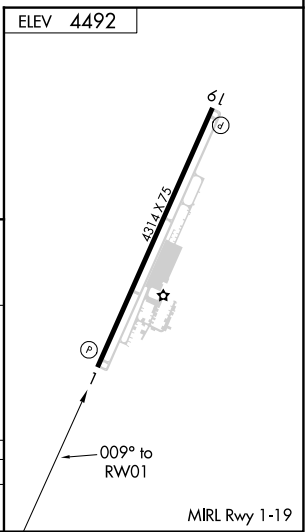
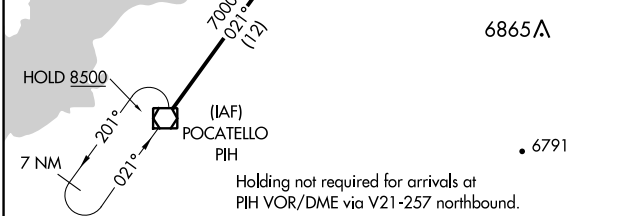
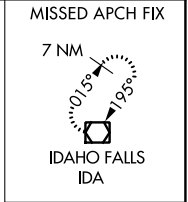
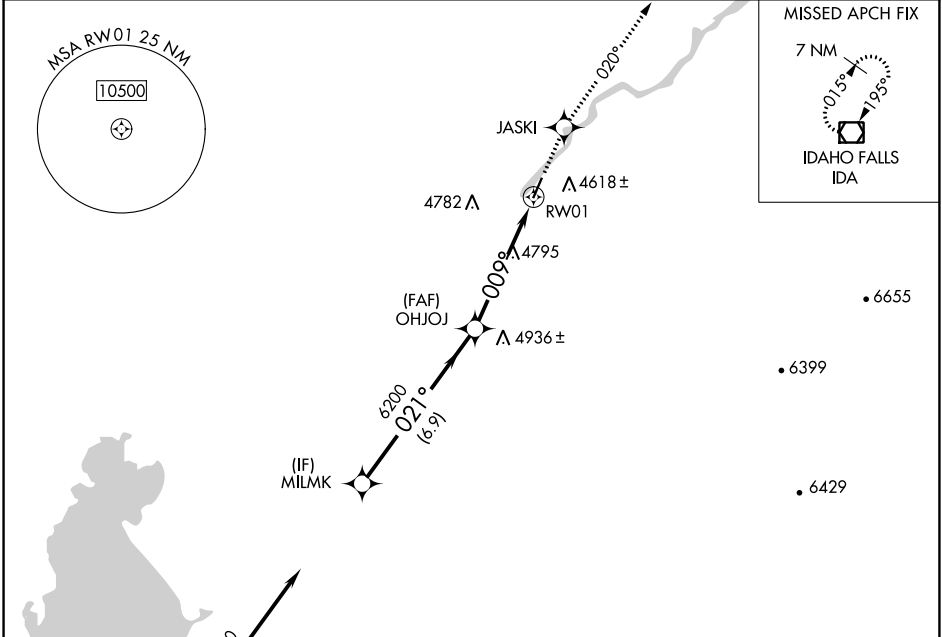
APP CRS	Rwy Idg	N/A
009°	TDZE	N/A
	Apt Elev	4492

# RNAV (GPS)-B

MCCARLEY FLD (U02)

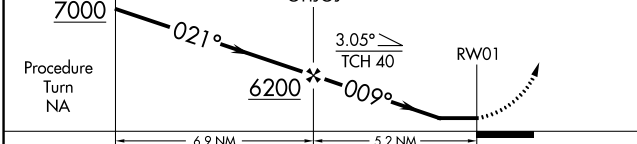
RNP APCH.	MISSED APPROACH: Climb to 7000 direct JASKI and on 020° track to IDA VOR/DME and hold.
▼ ▲ NA	Use Pocatello altimeter setting, when not received use Idaho Falls altimeter setting. Helicopter visibility reduction below 1 SM NA.

SALT LAKE CITY CENTER <b>128.35 239.25</b>	UNICOM <b>122.8 (CTAF)</b>
---	-------------------------------



VGSI and descent angle not coincident (VGSI Angle 3.00/TCH 39).

7000	JASKI	020° tr	IDA
↑	✧		◻



CATEGORY	A	B	C	D
CIRCLING	5380-1¼	888 (900-1¼)	5380-2¾ 888 (900-2¾)	5900-3 1408 (1500-3)

NW-1, 05 SEP 2024 to 03 OCT 2024

NW-1, 05 SEP 2024 to 03 OCT 2024