

WAAS CH <b>70431</b> <b>W24A</b>	APP CRS <b>245°</b>	Rwy Idg TDZE Apt Elev	<b>3605</b> <b>1666</b> <b>1666</b>
--	------------------------	-----------------------------	---

# RNAV (GPS) RWY 24

LOGAN COUNTY (6L4)

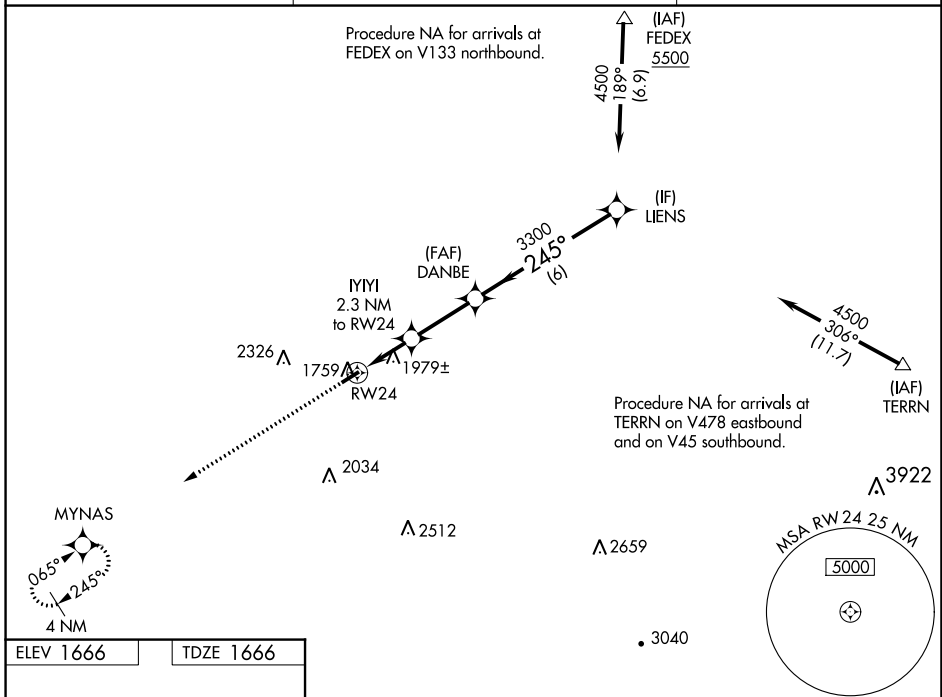
**⚠** For uncompensated Baro-VNAV systems, LNAV/VNAV NA below -18°C (0°F) or above 54°C (130°F). Baro-VNAV and VDP NA when using Pineville altimeter setting. DME/DME RNP-0.3 NA.  
**⚠** When local altimeter setting not received, use Pineville altimeter setting: increase LPV DA to 1985 feet and all visibilities  $\frac{1}{8}$  SM; increase LNAV/VNAV DA to 1988 feet and all visibilities  $\frac{1}{4}$  SM; increase all MDA 80 feet and LNAV Cat C visibility and Circling Cat B visibility  $\frac{1}{4}$  SM.

**MISSED APPROACH:**  
Climb to 3800 direct MYNAS and hold.

AWOS-3PT  
**119.375**

CHARLESTON APP CON  
**119.2 269.125**

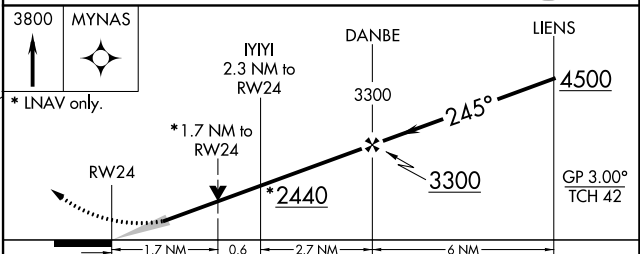
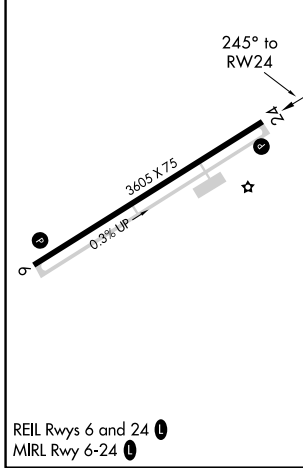
CTAF **122.9**



NE-4, 05 SEP 2024 to 03 OCT 2024

NE-4, 05 SEP 2024 to 03 OCT 2024

ELEV 1666	TDZE 1666
-----------	-----------



CATEGORY	A	B	C	D
LPV DA	1916- $\frac{7}{8}$	250 (300- $\frac{7}{8}$ )		NA
LNAV/VNAV DA	1919- $\frac{7}{8}$	253 (300- $\frac{7}{8}$ )		NA
LNAV MDA	2240-1	574 (600-1)	2240-1 $\frac{5}{8}$ 574 (600-1 $\frac{5}{8}$ )	NA
<b>C</b> CIRCLING	2360-1 694 (700-1)	2400-1 734 (800-1)	2720-3 1054 (1100-3)	NA