

APP CRS	Rwy Idg	<b>3005</b>
<b>356°</b>	TDZE	<b>1623</b>
	Apt Elev	<b>1623</b>

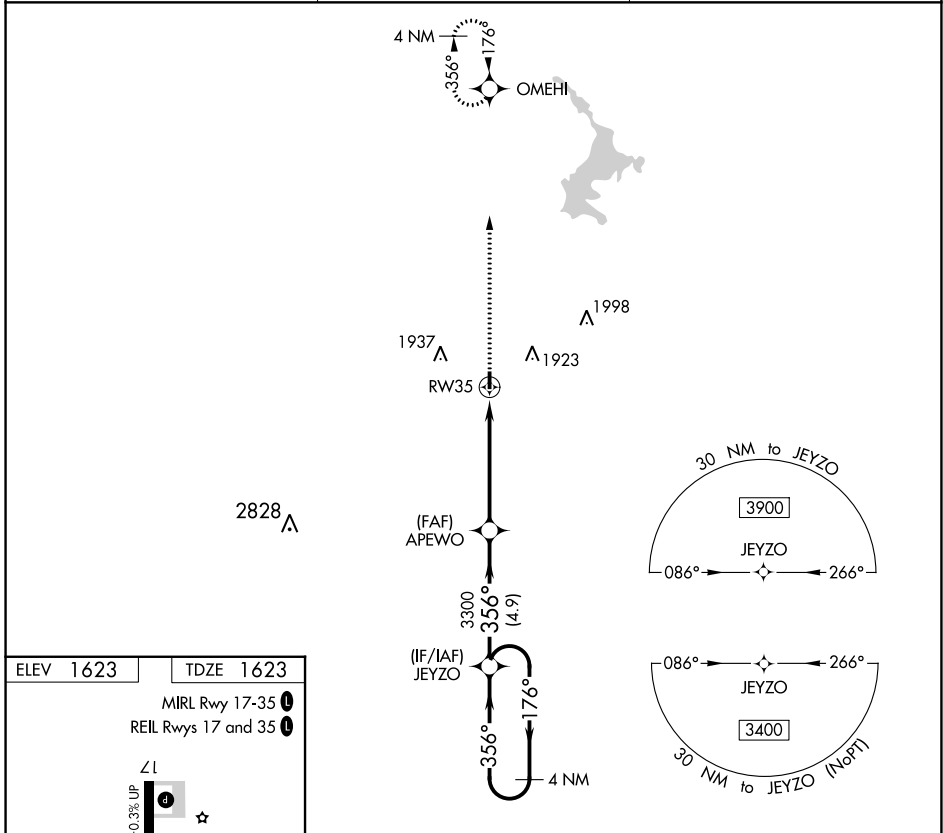
# RNAV (GPS) RWY 35

SLAYTON MUNI (DVP)

**⚠** When local altimeter setting not received, use Tracy Muni altimeter setting and increase all MDAs 80 feet. DME/DME RNP-0.3 NA. Procedure NA at night.  
**⚠** Helicopter visibility reduction below 1 SM NA.

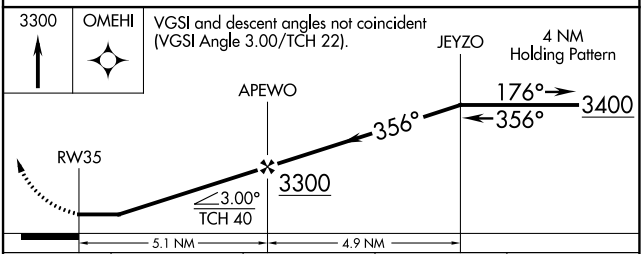
MISSED APPROACH: Climb to 3300 direct OMEHI and hold.

AWOS-3 <b>118.55</b>	MINNEAPOLIS CENTER <b>132.05 317.4</b>	CTAF <b>122.9 0</b>
-------------------------	-------------------------------------------	------------------------



ELEV 1623	TDZE 1623
MIRL Rwy 17-35 <b>0</b>	
REIL Rwy 17 and 35 <b>0</b>	

Z1  
 -0.3% UP  
 3005 X 40  
 35  
 356°



CATEGORY	A	B	C	D
LNAV MDA	2140-1	517 (600-1)		NA
<b>C</b> CIRCLING	2140-1	2300-1		NA
	517 (600-1)	677 (700-1)		

NC-1, 05 SEP 2024 to 03 OCT 2024

NC-1, 05 SEP 2024 to 03 OCT 2024