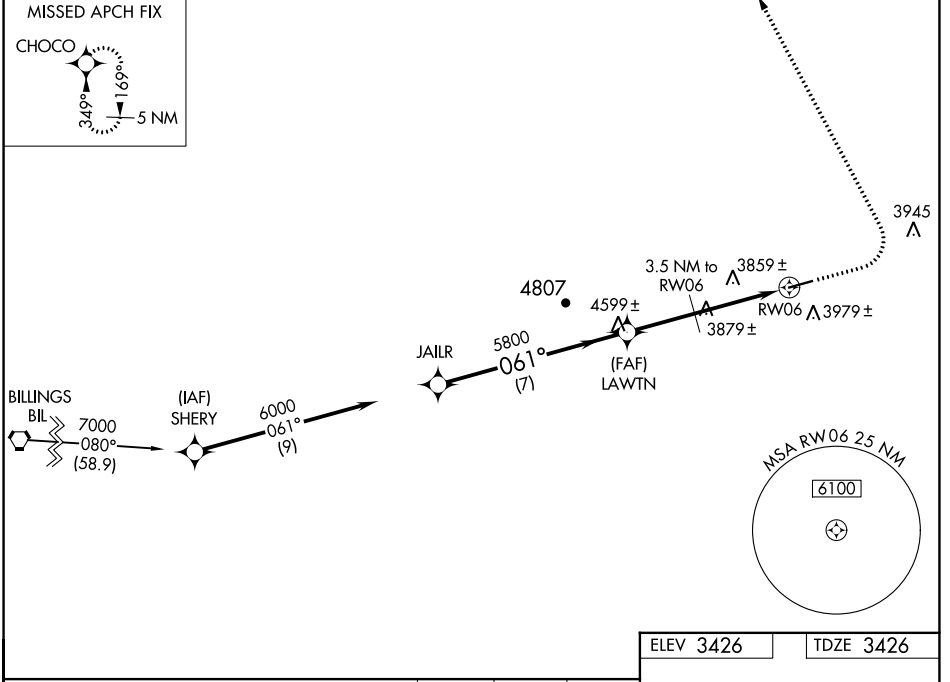


APP CRS	Rwy Idg	5100
061°	TDZE	3426
	Apt Elev	3426

GPS RWY 6

COLSTRIP (M46)

<p>NA</p> <p>When local altimeter not received use Miles City altimeter setting. Helicopter visibility reduction below 3/4 SM NA.</p>	<p>MISSED APPROACH: Climb to 4500 then climbing left turn to 6000 direct CHOCO WP and hold.</p>	
<p>AWOS-AV</p> <p>122.7</p>	<p>SALT LAKE CENTER</p> <p>126.85 305.2</p>	<p>UNICOM</p> <p>122.7 (CTAF) 0</p>



NW-1, 05 SEP 2024 to 03 OCT 2024

NW-1, 05 SEP 2024 to 03 OCT 2024

ELEV 3426	TDZE 3426
-----------	-----------

Procedure Turn NA	*5045 when using Miles City altimeter setting.			4500	6000	CHOCO
CATEGORY	A	B	C	D		
S-6	4220-1 794 (800-1)	4220-1 1/4 794 (800-1 1/4)	4220-2 1/4 794 (800-2 1/4)	NA		
CIRCLING	4340-1 1/4	914 (1000-1 1/4)	4340-2 3/4 914 (1000-2 3/4)	NA		
MILES CITY ALTIMETER SETTING						
S-6	NA					
CIRCLING	4580-1 1/4 1154 (1200-1 1/4)	4580-1 1/2 1154 (1200-1 1/2)	4580-3 1154 (1200-3)	NA		

