

APP CRS	Rwy Idg	<b>4051</b>
<b>297°</b>	TDZE	<b>4146</b>
	Apt Elev	<b>4149</b>

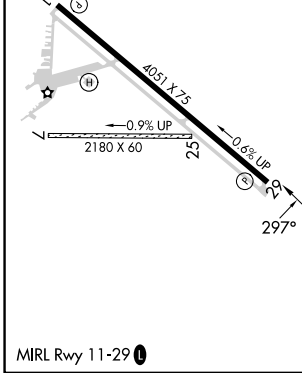
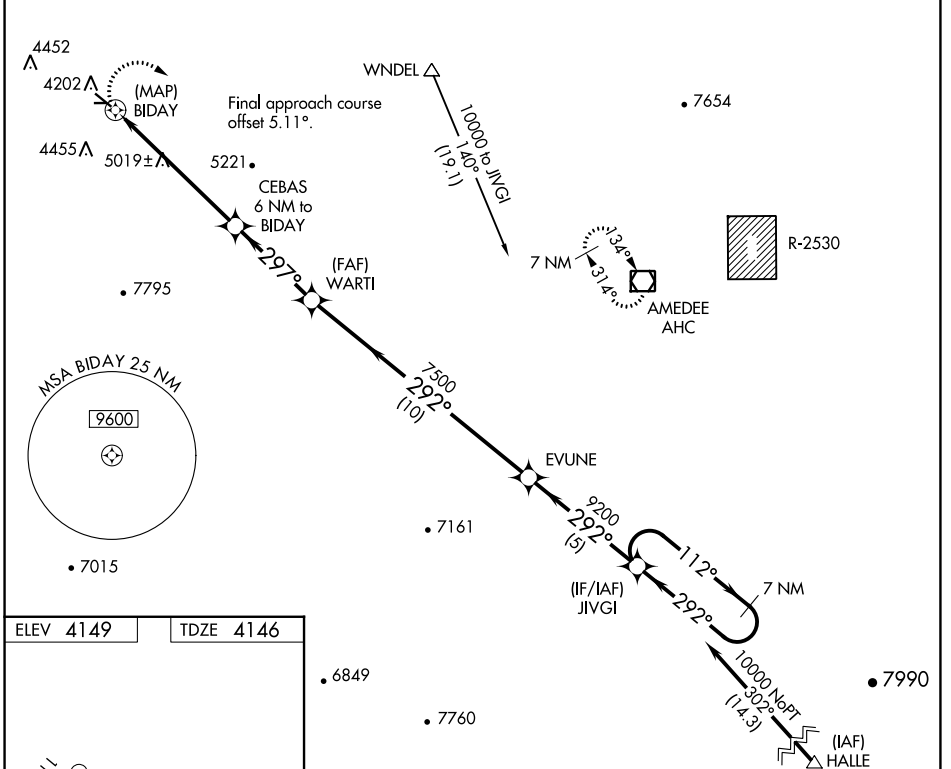
# RNAV (GPS) RWY 29

SUSANVILLE MUNI (SVLE)

**⚠** DME/DME RNP-0.3 NA. When local altimeter setting not received, use Reno/Stead altimeter setting and increase all MDA 720 feet. Circling to Rwy 7/25 NA. Rwy 29 helicopter visibility reduction below 3/4 SM NA. Circling NA for Cat D southwest of Rwy 11-29.

**⚠** MISSED APPROACH: Climbing right turn to 14000 direct AHC VOR/DME and hold, continue climb-in-hold to 14000.

AWOS-3 <b>133.8</b>	OAKLAND CENTER <b>128.8 285.5</b>	UNICOM <b>122.8 (CTAF) 0</b>
------------------------	--------------------------------------	---------------------------------



14000 AHC	Visual Segment - Obstacles.		JIVGI 7 NM Holding Pattern
	CEBAS 6 NM to BIDAD	WARTI	EVUNE
	BIDAD	7500	9200
	6200	297°	292°
	0.2	6 NM	3.8 NM
		10 NM	5 NM
CATEGORY	A	B	C
LNAV MDA	5760-1¼ 1614 (1700-1¼)	5760-1½ 1614 (1700-1½)	5760-3 1614 (1700-3)
CIRCLING	5760-1¼ 1611 (1700-1¼)	5760-1½ 1611 (1700-1½)	5780-3 1631 (1700-3)
			6060-3 1911 (2000-3)

SW-2, 05 SEP 2024 to 03 OCT 2024

SW-2, 05 SEP 2024 to 03 OCT 2024