

APP CRS	Rwy Idg	<b>2705</b>
<b>339°</b>	TDZE	<b>2066</b>
	Apt Elev	<b>2066</b>

# RNAV (GPS) RWY 34

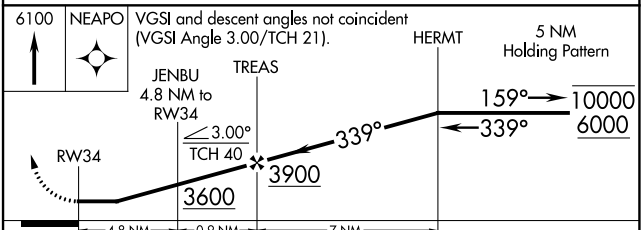
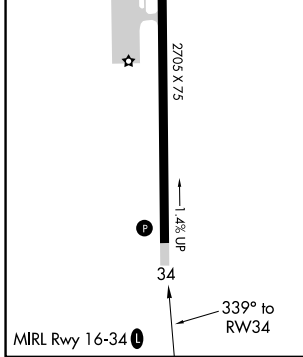
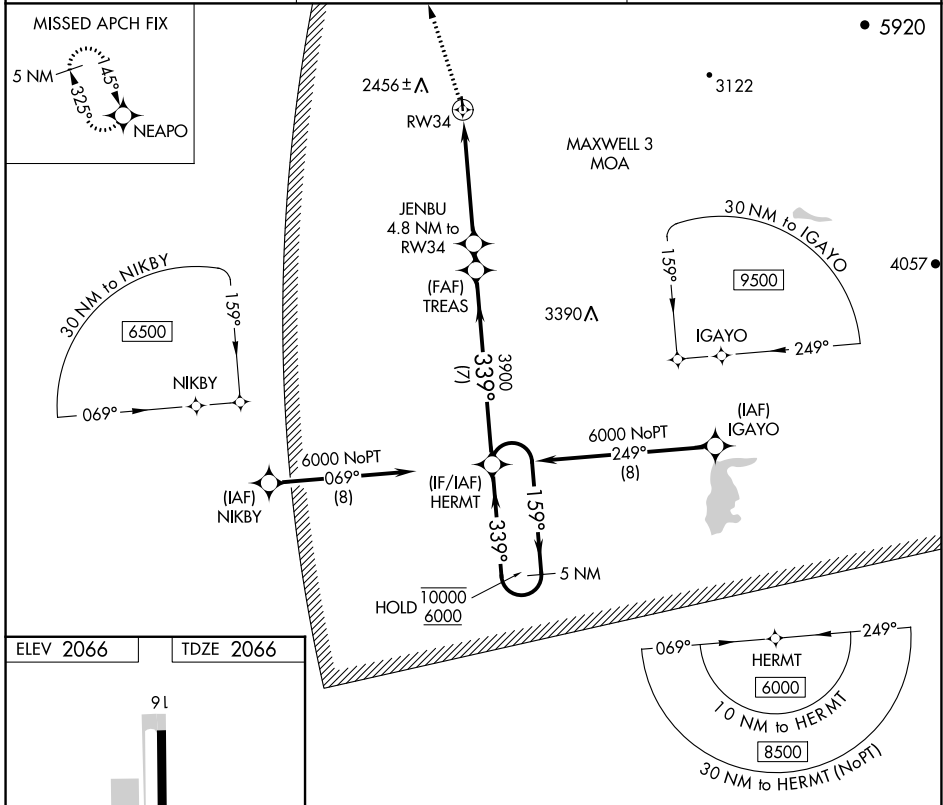
ELLS FLD/WILLITS MUNI (O28)

RNP APCH - GPS.

**NA** Circling NA west of Rwy 16-34. Rwy 34 helicopter visibility reduction below 1 SM NA. Procedure NA at night. Use Ukiah altimeter setting; when not received, procedure NA.

MISSED APPROACH: Climb to 6100 direct NEAPO and hold, continue climb-in-hold to 6100.

UKI ASOS <b>119.275</b>	OAKLAND CENTER <b>132.2 350.3</b>	UNICOM <b>122.8 (CTAF)</b>
----------------------------	--------------------------------------	-------------------------------



CATEGORY	A	B	C	D
LNAV MDA	3060-1¼ 994 (1000-1¼)	3060-1½ 994 (1000-1½)	3060-3 994 (1000-3)	NA
<b>CIRCLING</b>	3060-1¼ 994 (1000-1¼)	3060-1½ 994 (1000-1½)	3580-3 1514 (1600-3)	NA

SW-2, 05 SEP 2024 to 03 OCT 2024

SW-2, 05 SEP 2024 to 03 OCT 2024