

WAAS CH <b>65735</b> <b>W16A</b>	APP CRS <b>165°</b>	Rwy Idg TDZE Apt Elev	<b>7600</b> <b>5433</b> <b>5433</b>
--	------------------------	-----------------------------	---

# RNAV (GPS) RWY 16

ENNIS BIG SKY (EKS)

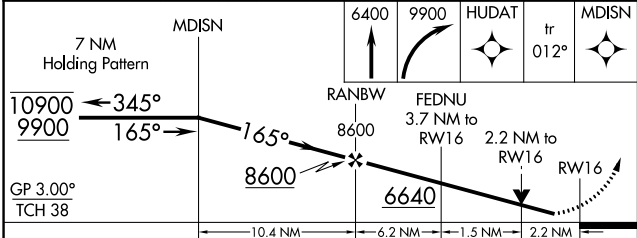
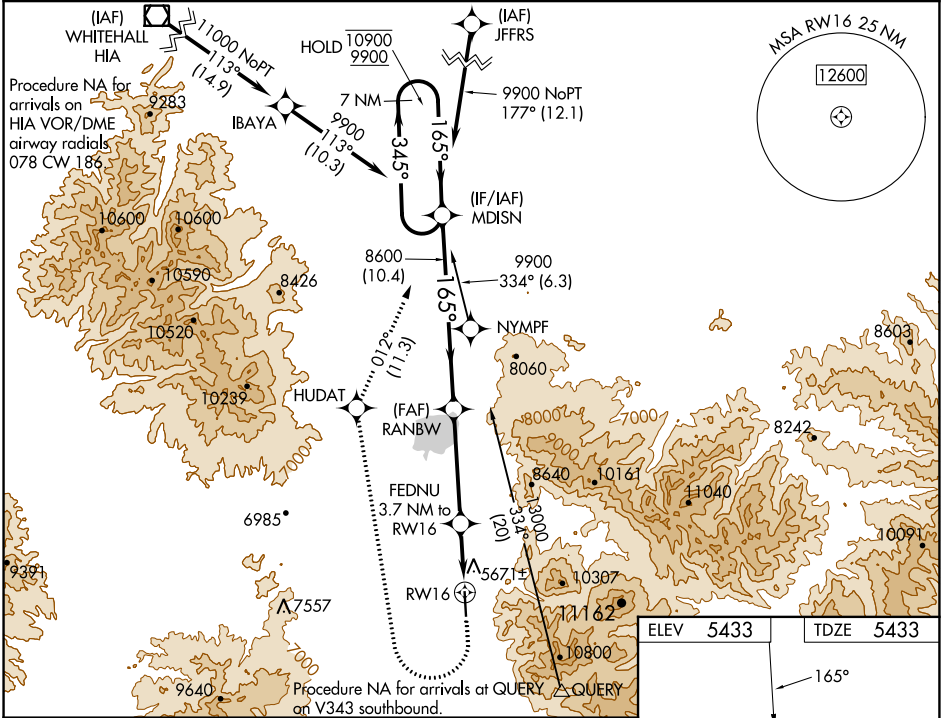
RNP APCH-GPS.

MISSED APPROACH: (Do not exceed 185K until MDISN) Climb to 6400 then climbing right turn to 9900 direct HUDAT and on track 012° to MDISN and hold.

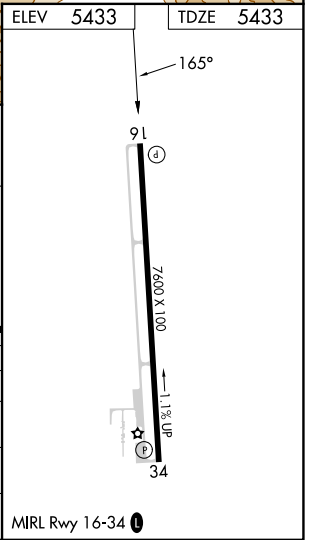
⚠ Circling NA east of Rwy 16-34. Rwy 16 helicopter visibility reduction below 3/4 SM NA. Baro-VNAV NA.

🌡 -24°C

AWOS-3P <b>119.85</b>	BIG SKY APP CON ★ <b>118.975 226.675</b>	UNICOM <b>122.8 (CTAF)</b>
--------------------------	---	-------------------------------



CATEGORY	A	B	C	D
LPV DA	5708-1 275 (300-1)			
LNAV/VNAV DA	6625-5 1192 (1200-5)			
LNAV MDA	6160-1 727 (800-1)	6160-1¼ 727 (800-1¼)	6160-2 727 (800-2)	
CIRCLING	6160-1 727 (800-1)	6160-1¼ 727 (800-1¼)	6160-2 727 (800-2)	6160-2¼ 727 (800-2¼)



NW-1, 05 SEP 2024 to 03 OCT 2024

NW-1, 05 SEP 2024 to 03 OCT 2024