

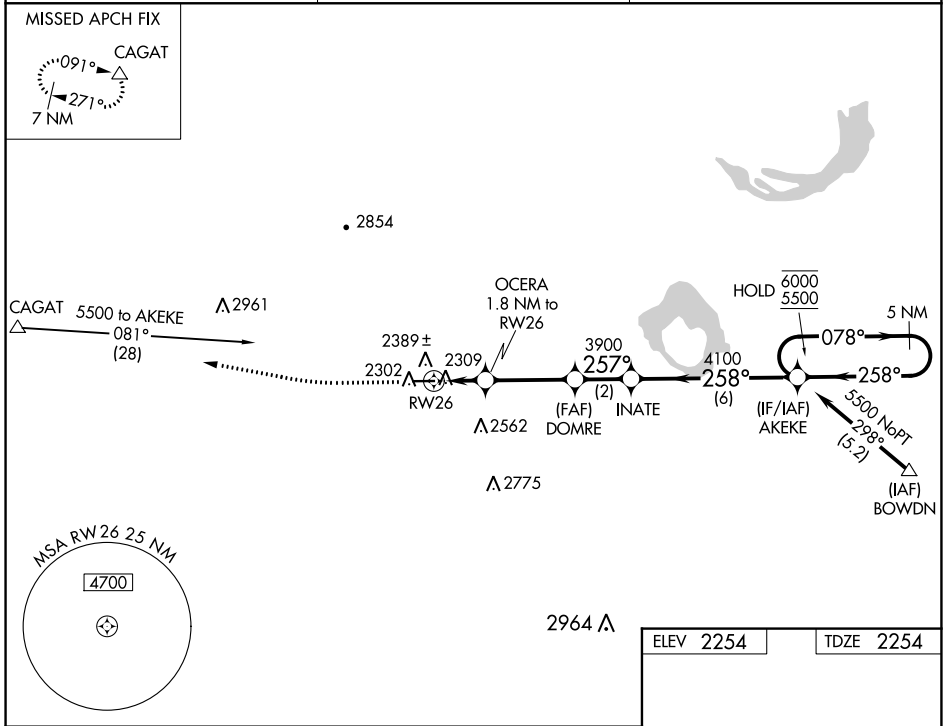
WAAS CH 97721 W26A	APP CRS 257°	Rwy Idg TDZE Apt Elev	4500 2254 2254
--	------------------------	-----------------------------	---

RNAV (GPS) RWY 26

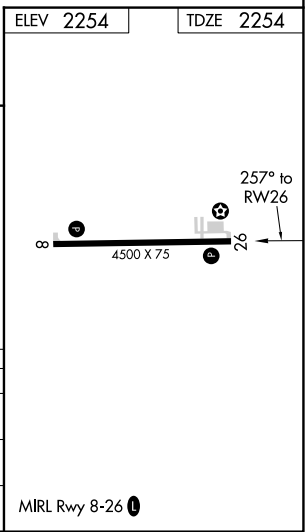
MALTA (M75)

RNP APCH. ▼	MISSED APPROACH: Climb to 2700, then climb to 6500 direct CAGAT and hold, continue climb-in-hold 6500.
----------------	--

AWOS-3 119.25	SALT LAKE CITY CENTER 126.85 305.2	AUNICOM 122.8 (CTAF) ①
-------------------------	--	----------------------------------



2700	6500	CAGAT	VGSI and descent angles not coincident (VGSI Angle 3.00/TCH 27).			
OCERA 1.8 NM to RWY 26		DOMRE	INATE	AKEKE	5 NM Holding Pattern	
0.9 NM to RWY 26		3900	4100	6000	5500	
3.00° TCH 40		2880	257°	258°	078°	
0.9 NM		0.9 NM	3.2 NM	2 NM	6 NM	
CATEGORY	A	B	C	D		
LP MDA	2560-1	306 (400-1)			NA	
LNAV MDA	2640-1	386 (400-1)			NA	
③ CIRCLING	2800-1 546 (600-1)	2880-1 626 (700-1)			NA	



NW-1, 05 SEP 2024 to 03 OCT 2024

NW-1, 05 SEP 2024 to 03 OCT 2024