

RNAV (GPS) RWY 21

AKIAK (AKI) (PFAK)

APP CRS 211°	Rwy Idg 3200
	TDZE 40
	Apt Elev 40

RNP APCH.

⚠ Procedure NA at night. Use Bethel altimeter setting.

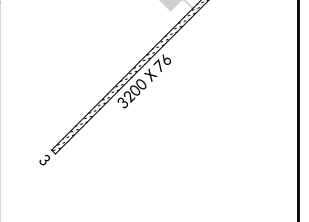
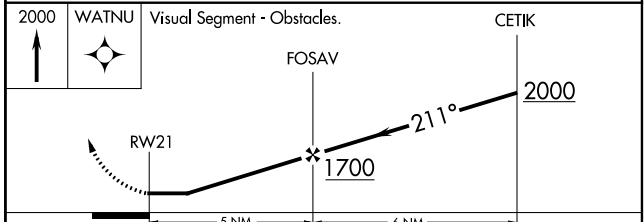
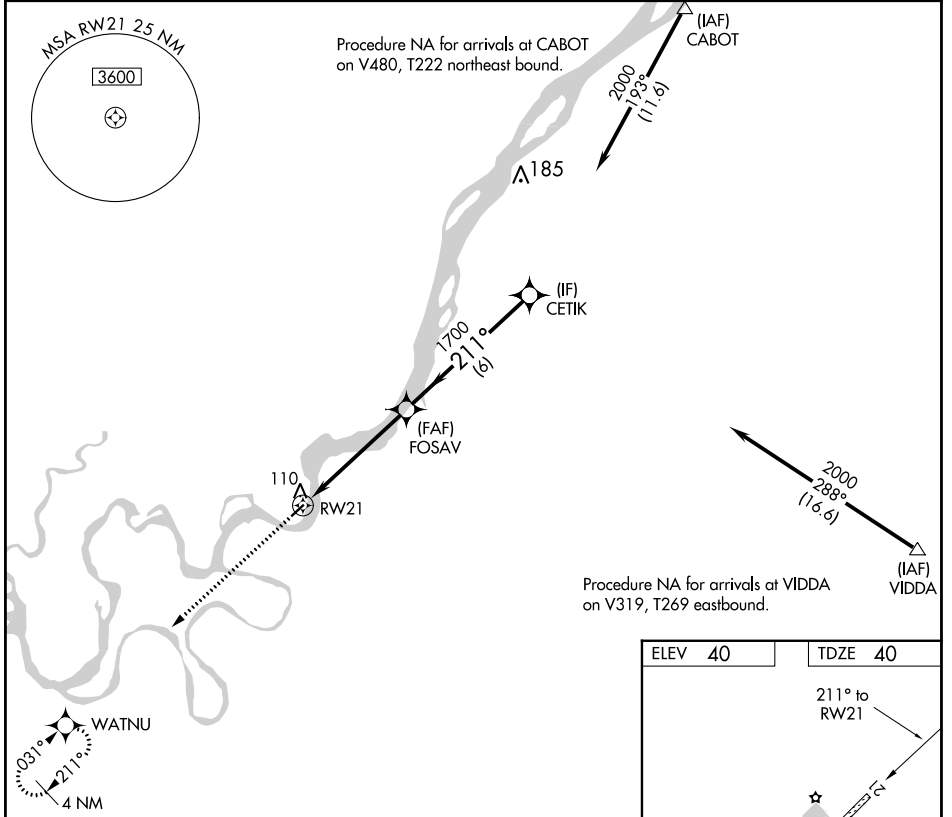
⚠ NA Rwy 21 helicopter visibility reduction below 1 SM NA.

MISSED APPROACH: Climb to 2000 direct WATNU and hold.

BET/PABE ASOS
135.45

ANCHORAGE CENTER
125.2 372.0

CTAF
122.90



CATEGORY	A	B	C	D
LNVA MDA	600-1	560 (600-1)		NA
CIRCLING	600-1 560 (600-1)	620-1 580 (600-1)		NA

MIRL Rwy 3-21

AK, 05 SEP 2024 to 31 OCT 2024

AK, 05 SEP 2024 to 31 OCT 2024