

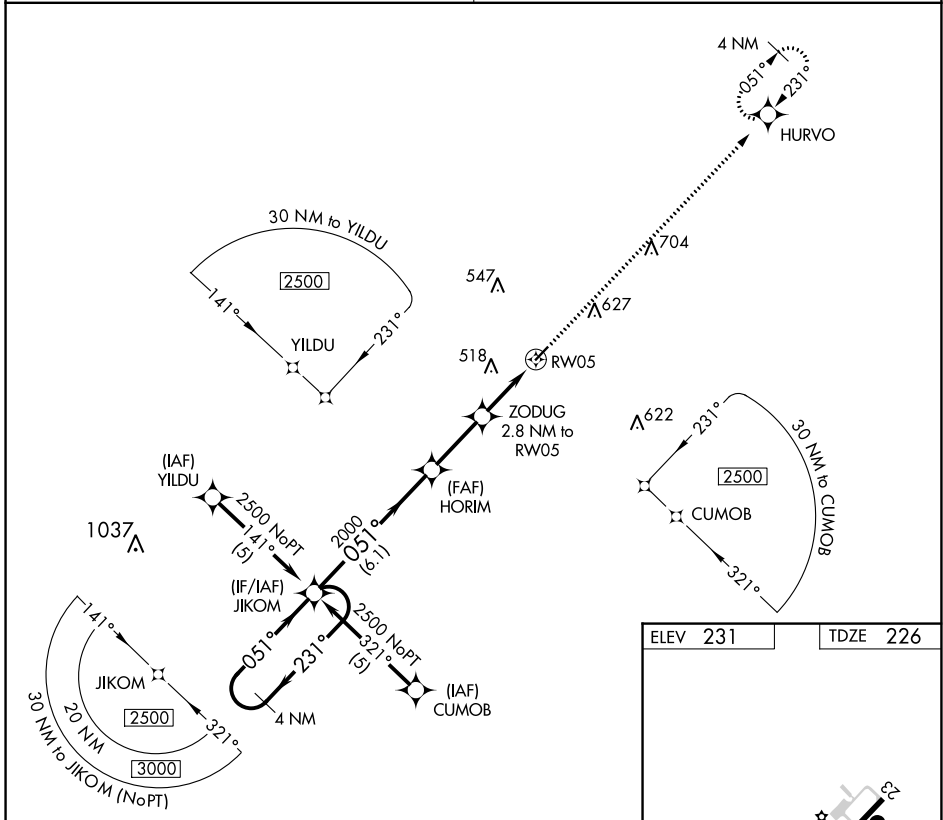
APP CRS	Rwy Idg	3603
051°	TDZE	226
	Apt Elev	231

RNAV (GPS) RWY 5

BAMBERG COUNTY (99N)

RNP APCH.	<p>Procedure NA at night.</p> <p>NA Rwy 5 helicopter visibility reduction below 1 SM NA.</p> <p>Use Orangeburg Muni altimeter setting; when not received, procedure NA.</p>	MISSED APPROACH: Climb to 2500 direct HURVO and hold.
-----------	-----------------------------------------------------------------------------------------------------------------------------------------------------------------------------	-------------------------------------------------------

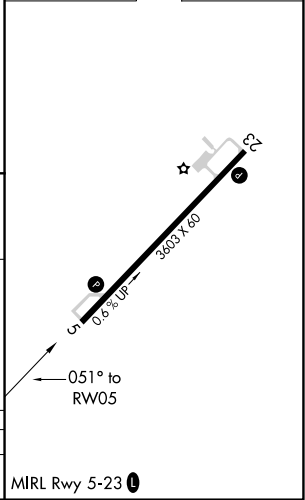
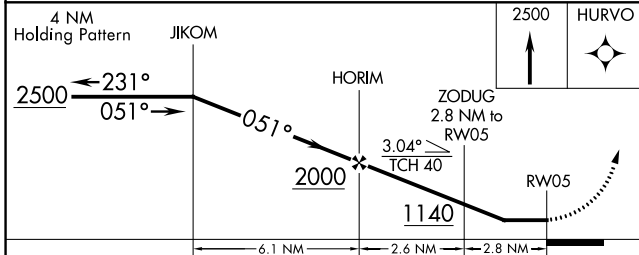
COLUMBIA APP CON	UNICOM
124.15 338.2	122.8 (CTAF) 0



SE-2, 05 SEP 2024 to 03 OCT 2024

SE-2, 05 SEP 2024 to 03 OCT 2024

ELEV 231	TDZE 226
----------	----------



CATEGORY	A	B	C	D
LNAV MDA	740-1	514 (600-1)	NA	NA