

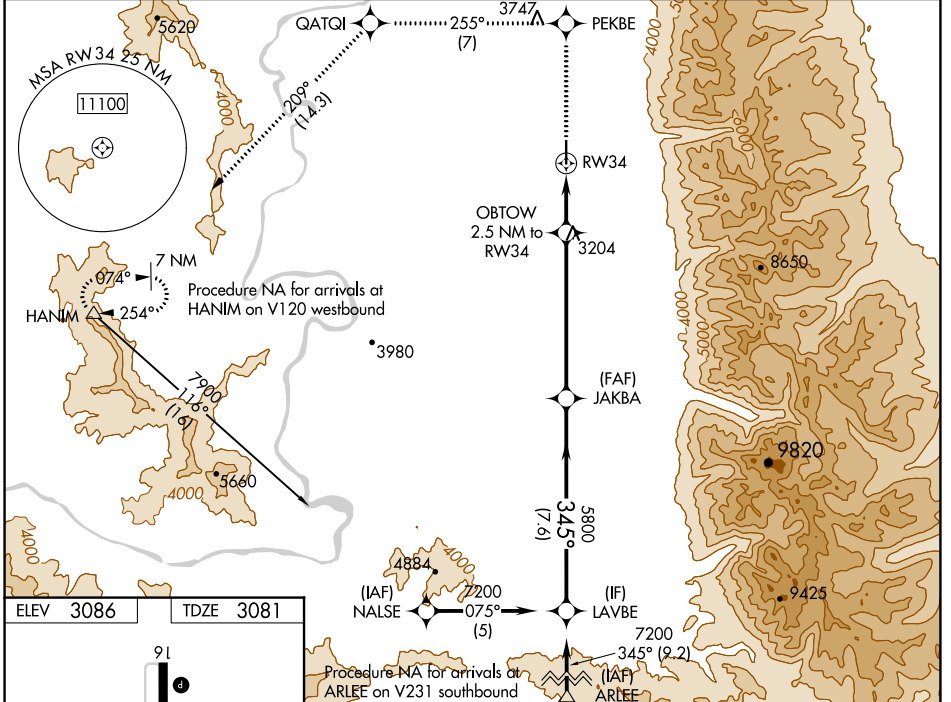
WAAS CH 86614 W34A	APP CRS 345°	Rwy Idg TDZE Apt Elev	4798 3081 3086
----------------------------------------	------------------------	-----------------------------	-------------------------------------------

RNAV (GPS) RWY 34

RONAN (7S)

RNP APCH.	MISSED APPROACH: Climb to 13000 direct PEKBE and on track 255° to QATQI and on track 209° to HANIM and hold, continue climb-in-hold to 13000.
<p>Baro-VNAV NA when using Missoula altimeter setting. For uncompensated Baro-VNAV systems, procedure NA below -21°C or above 54°C. Circling NA east of Rwy 16-34. When local altimeter setting not received, use Missoula altimeter setting and increase LPV DA to 3545 and all visibilities 3/8 SM, LNAV/VNAV DA to 3545 and all visibilities 3/8 SM; and increase all MDAs 120 feet.</p>	

AWOS-2 119.925	SALT LAKE CITY CENTER 127.075 244.875	AUNICOM 122.8 (CTAF)
--------------------------	-------------------------------------------------	--------------------------------



ELEV 3086	TDZE 3081	<p>Procedure NA for arrivals at HANIM on V120 westbound</p>		<p>Procedure NA for arrivals at ARLEE on V231 southbound</p>	
13000	PEKBE	tr 255°	QATQI	tr 209°	HANIM
<p>*LNAV only</p>					
<p>OBTOW 2.5 NM to RWY34</p>		<p>5800</p>		<p>7200</p>	
<p>RWY34</p>		<p>3900*</p>		<p>5800</p>	
<p>2.5 NM</p>		<p>5.9 NM</p>		<p>7.6 NM</p>	
<p>VGSJ and RNAV glidepath not coincident (VGSJ Angle 3.00/TCH 22). LAVBE</p>					
<p>GP 3.00° TCH 40</p>					
CATEGORY	A	B	C	D	
LPV DA	3438-1	357 (400-1)	NA		
LNAV/VNAV DA	3438-1¼	357 (400-1¼)	NA		
LNAV MDA	3520-1	439 (500-1)	NA		
CIRCLING	3560-1	474 (500-1)	NA		

NW-1, 05 SEP 2024 to 03 OCT 2024

NW-1, 05 SEP 2024 to 03 OCT 2024