

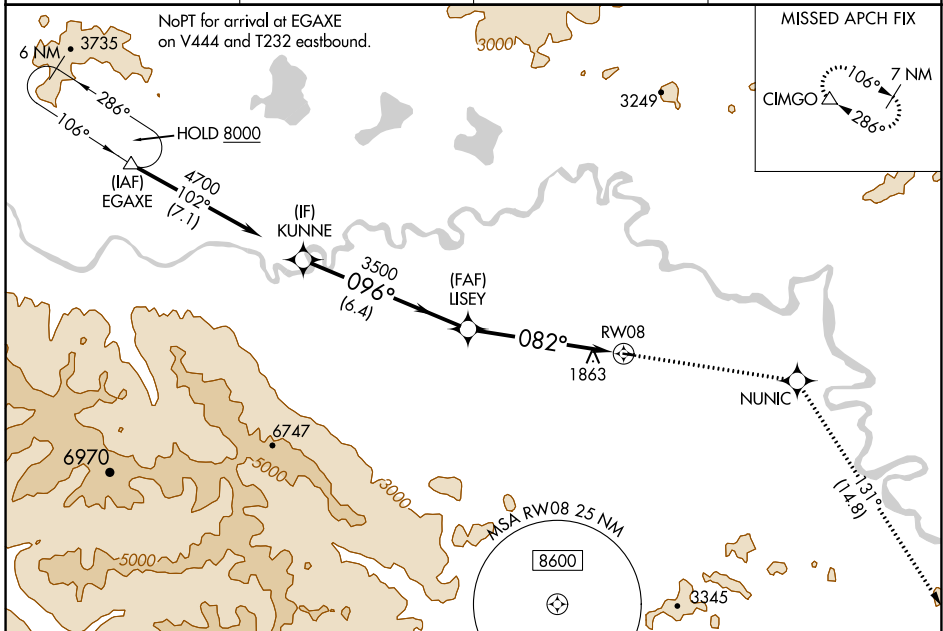
WAAS CH <b>77546</b> <b>W08A</b>	APP CRS <b>082°</b>	Rwy Idg TDZE Apt Elev	<b>2509</b> <b>1643</b> <b>1643</b>
--	------------------------	-----------------------------	---

# RNAV (GPS) RWY 8

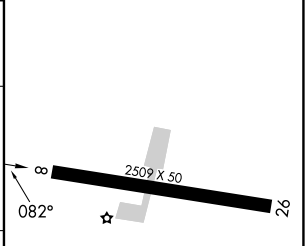
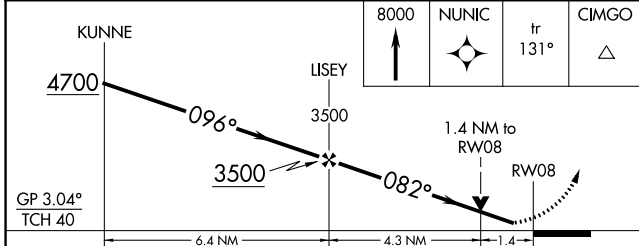
TOK JUNCTION (6K8) (PFTO)

RNP APCH - GPS.	MISSED APPROACH: Climb to 8000 direct NUNIC and on track 131° to CIMGO and hold, continue climb-in-hold to 8000.
<p><b>▼</b> Rwy 8 helicopter visibility reduction below 3/4 SM NA. For uncompensated Baro-VNAV systems, LNAV/VNAV NA below -25°C or above 54°C.</p>	

AWOS-3P <b>118.1</b>	ANCHORAGE CENTER <b>126.55 323.0</b>	NORTHWAY RADIO <b>122.4</b>	UNICOM <b>122.8 (CTAF) 0</b>
-------------------------	---	--------------------------------	---------------------------------



ELEV 1643	TDZE 1643
-----------	-----------



CATEGORY	A	B	C	D
LPV DA	1895-1 252 (300-1)			NA
LNAV/VNAV DA	2120-1 3/8 477 (500-1 3/8)			NA
LNAV MDA	2120-1 477 (500-1)		2120-1 3/8 477 (500-1 3/8)	NA
<b>C</b> CIRCLING	2180-1 537 (600-1)		2180-1 1/2 537 (600-1 1/2)	NA

MIRL Rwy 8-26 0

AK, 05 SEP 2024 to 31 OCT 2024

AK, 05 SEP 2024 to 31 OCT 2024