

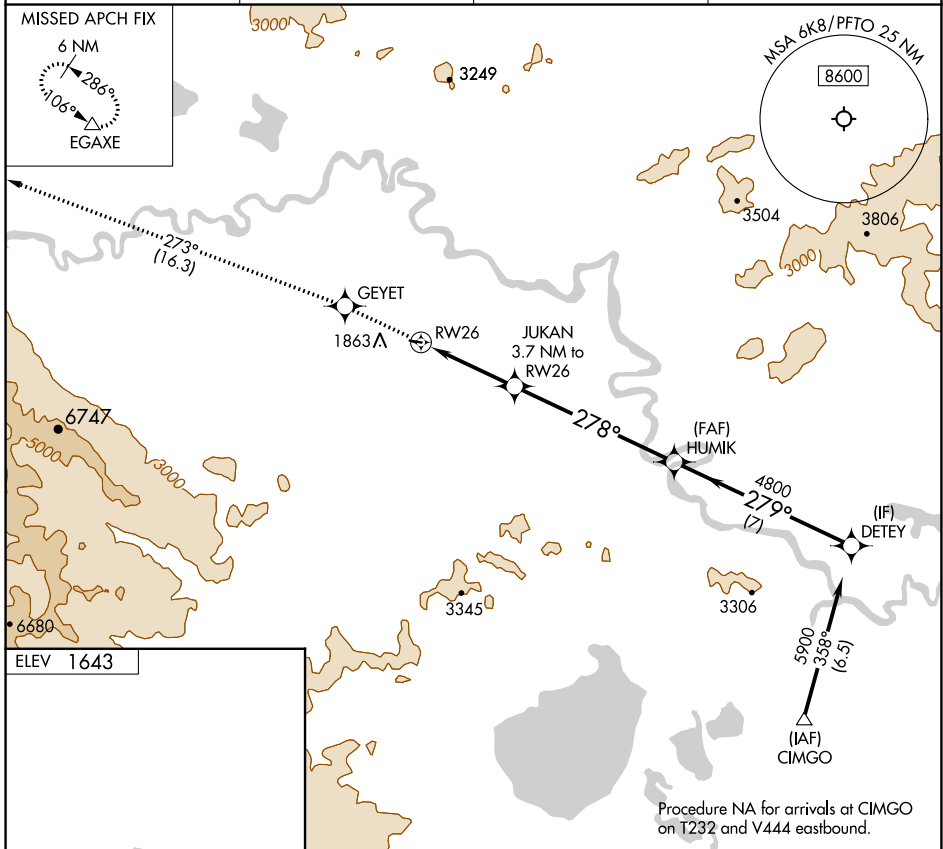
APP CRS <b>278°</b>	Rwy Idg TDZE Apt Elev	<b>N/A</b> <b>N/A</b> <b>1643</b>
------------------------	-----------------------------	---

# RNAV (GPS)-A

TOK JUNCTION (6K8) (PFTO)

RNP APCH - GPS.	MISSED APPROACH: Climb to 8000 direct GEYET and on track 273° to EGAXE and hold, do not exceed 230K when continuing climb-in-hold to 8000.
-----------------	--

AWOS-3P <b>118.1</b>	ANCHORAGE CENTER <b>126.55 323.0</b>	NORTHWAY RADIO <b>122.4</b>	UNICOM <b>122.8 (CTAF)</b>
-------------------------	---	--------------------------------	-------------------------------



8000	GEYET	tr 273°	EGAXE	DETEY
				5900
	RW26	JUKAN 3.7 NM to RW26	HUMIK	
		2820	4800	
		278°	279°	
		3.7 NM	6.3 NM	7 NM
CATEGORY	A	B	C	D
CIRCLING	2180-1	537 (600-1)	NA	

AK, 05 SEP 2024 to 31 OCT 2024

AK, 05 SEP 2024 to 31 OCT 2024