

# RNAV (GPS) Y RWY 32

BETHEL RGNL (ØB1)

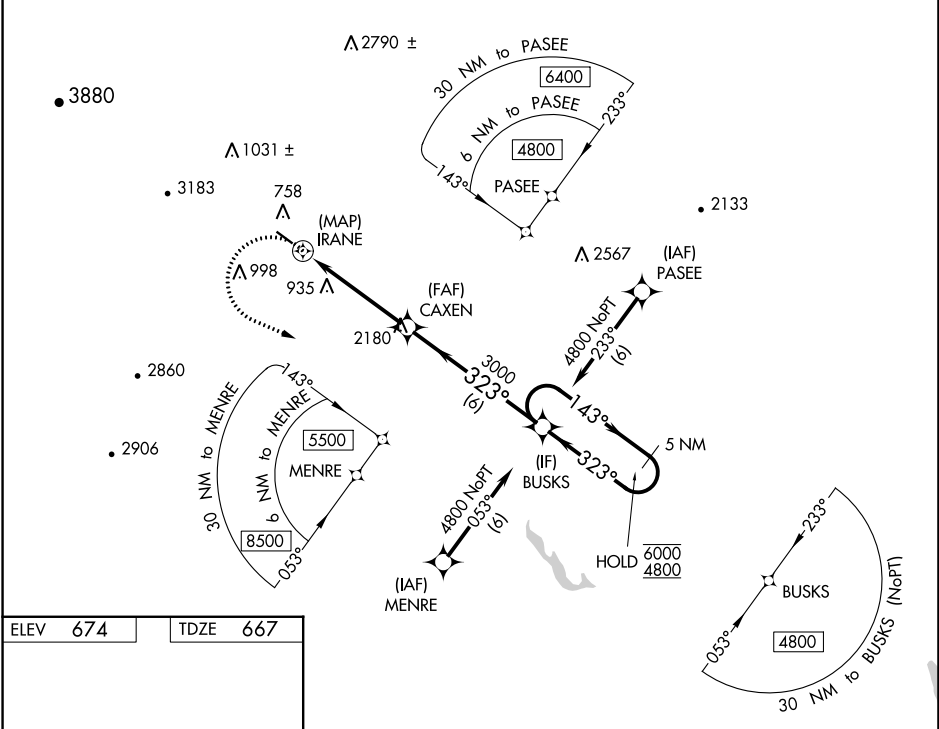
APP CRS	Rwy Idg	<b>3818</b>
<b>323°</b>	TDZE	<b>667</b>
	Apt Elev	<b>674</b>

RNP APCH-GPS.

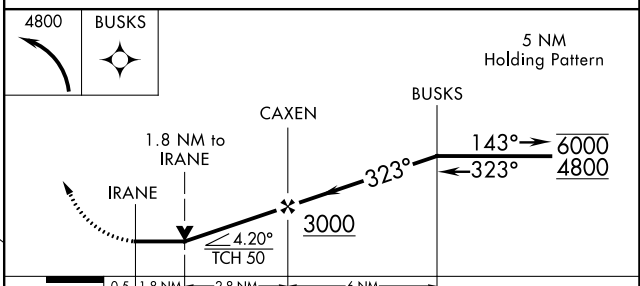
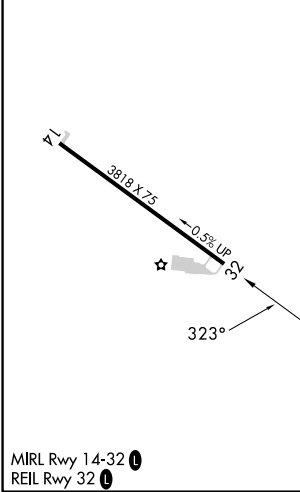
**NA** Circling Rwy 14 NA at night. Rwy 32 helicopter visibility reduction below 3/4 SM NA. When local altimeter setting not received, use Augusta altimeter setting and increase all MDAs 160 feet. Caution any go-around after passing IRANE, may not provide standard obstacle clearance. VDP NA when using Augusta State altimeter setting.

MISSED APPROACH: Climbing left turn to 4800 direct BUSKS and hold, continue climb-in-hold to 4800.

AWOS-AV	PORTLAND APP CON*	CTAF
<b>119.075</b>	<b>125.5 269.35</b>	<b>122.90</b>



ELEV	674	TDZE	667
------	-----	------	-----



CATEGORY	A	B	C	D
LNAV MDA	1740-1¼ 1073 (1100-1¼)	1740-1½ 1073 (1100-1½)	NA	
<b>C</b> CIRCLING	1740-1¼ 1066 (1100-1¼)	2260-1½ 1586 (1600-1½)	NA	

NE-1, 05 SEP 2024 to 03 OCT 2024

NE-1, 05 SEP 2024 to 03 OCT 2024