

APP CRS	Rwy Idg	3300
066°	TDZE	115
	Apt Elev	115

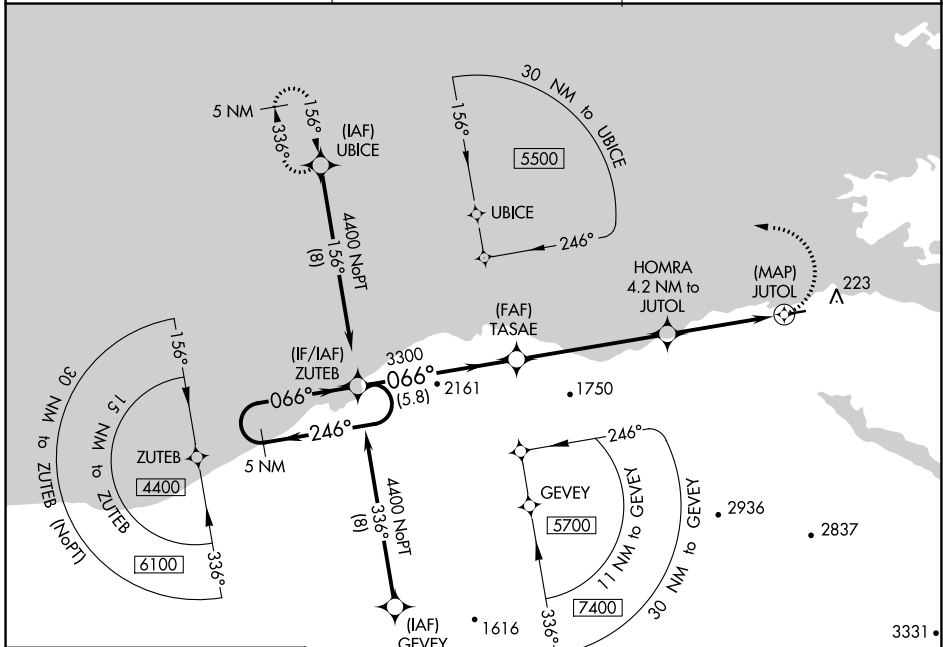
RNAV (GPS) RWY 7

KOKHANOK (9K2) (PFFK)

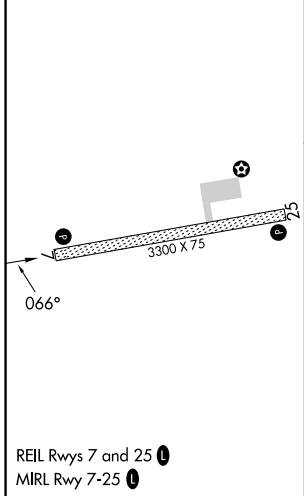
NA Rwy 7 helicopter visibility reduction below 1 SM NA.
DME/DME RNP-0.3 NA. Use Iliamna altimeter setting.
Procedure NA at night.

MISSED APPROACH: Climbing left turn to 4400 direct UBICE and hold, continue climb-in-hold to 4400.

III/PAIL ASOS 134.95	ANCHORAGE CENTER 118.8	CTAF 122.9
--------------------------------	----------------------------------	----------------------



ELEV 115	TDZE 115
----------	----------



REIL Rws 7 and 25
MIRL Rwy 7-25

	5 NM Holding Pattern	ZUTEB	Visual Segment - Obstacles.	4400	UBICE
	4400	← 246°	→ 066°	3300	1560
				5.8 NM	5.5 NM
				4.2 NM	0.2
					JUTOL
					4.2 NM to JUTOL
CATEGORY	A	B	C	D	
LNAV MDA	820-1	705 (800-1)	820-2	705 (800-2)	
CIRCLING	1040-1¼ 925 (1000-1¼)	1100-1½ 985 (1000-1½)	1100-3	985 (1000-3)	

KOKHANOK, ALASKA
Amdt 1 19JUL18

RNAV (GPS) RWY 7

AK, 05 SEP 2024 to 31 OCT 2024

AK, 05 SEP 2024 to 31 OCT 2024