

WAAS CH 93902 W13A	APP CRS 126°	Rwy Idg TDZE 1124 Apt Elev 1126	5500
--	------------------------	---	-------------

RNAV (GPS) RWY 13

WILLMAR MUNI/JOHN L RICE FLD (BDH)

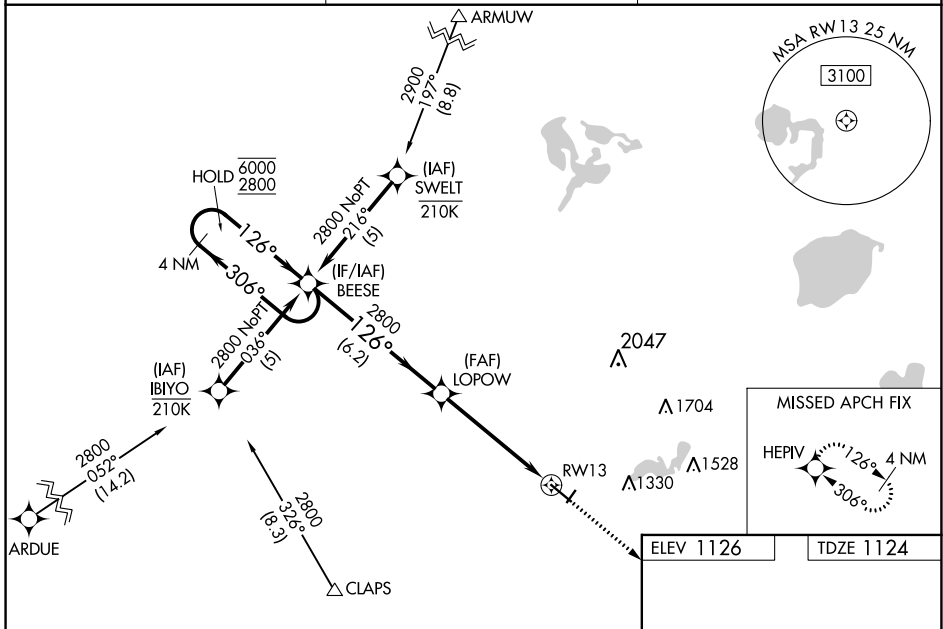
RNP APCH - GPS.

⚠ For uncompensated Baro-VNAV systems, LNAV/VNAV NA below -17°C or above 54°C. Circling NA to Rwy's 3 and 21. Inop table does not apply to LPV. For inop ALS, increase LNAV/VNAV all Cats visibility to 1½ SM, LNAV Cats A and B to 1 SM and LNAV Cats C and D visibility to 1¾ SM. When local altimeter setting not received, use Olivia altimeter setting: increase LPV DA to 1379 feet; increase LNAV/VNAV DA to 1584 feet and all visibilities ½ SM; increase all MDAs 60 feet and Circling visibility Cat D ¼ SM. Baro-VNAV and VDP NA when using Olivia Rgnl altimeter setting.

MALSR

MISSED APPROACH:
Climb to 2800 direct HEPIV and hold.

AWOS-3PT 118.75	MINNEAPOLIS CENTER 125.5 323.1	UNICOM 122.8 (CTAF) 0
---------------------------	--	---------------------------------



4 NM Holding Pattern		BEESE		LOPOW		2800 HEPIV	
6000		306°		126°		2800	
2800		126°		2800		1.3 NM to RWY 13	
GP 3.00°		TCH 49		6.2 NM		3.8 NM	
126°		126°		126°		126°	
CATEGORY	A	B	C	D			
LPV DA	1324-¾		200 (200-¾)				
LNAV/VNAV DA	1529-¾		405 (500-¾)				
LNAV MDA	1600-¾		476 (500-¾)		1600-1		476 (500-1)
CIRCLING	1600-1		474 (500-1)		1660-1½		1960-2¾
				534 (600-1½)		834 (900-2¾)	
HIRL Rwy 13-31 0							
REIL Rwy 31 0							

NC-1, 05 SEP 2024 to 03 OCT 2024

NC-1, 05 SEP 2024 to 03 OCT 2024