

APP CRS 249°	Rwy Idg TDZE Apt Elev	3050 1755 1755
------------------------	-----------------------------	---

RNAV (GPS) RWY 26

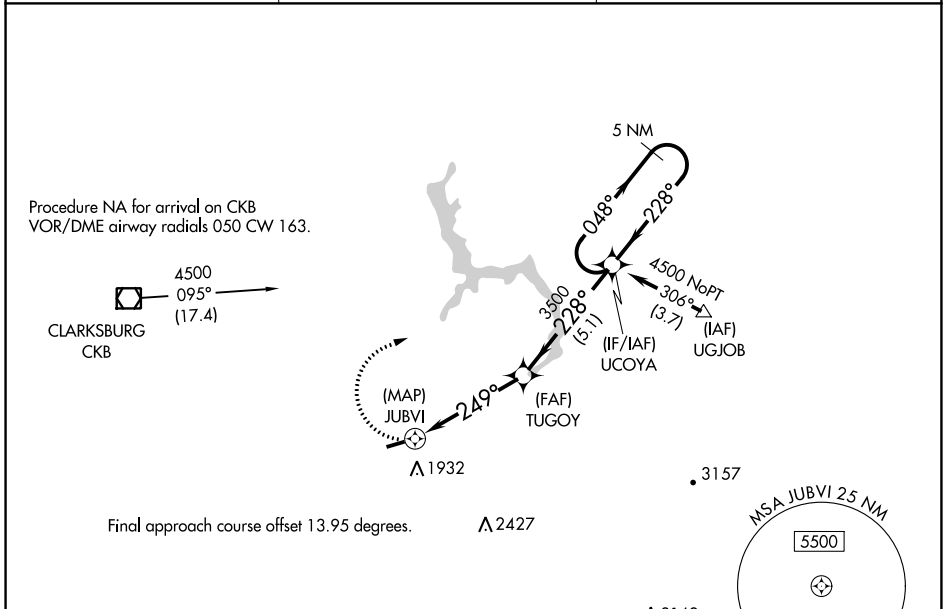
PHILIPPI/BARBOUR COUNTY RGNL (79D)

▼ Rwy 26 helicopter visibility reduction below 1 SM NA.
DME/DME RNP-0.3 NA. Procedure NA at night.

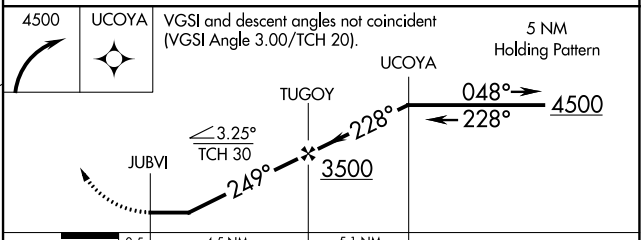
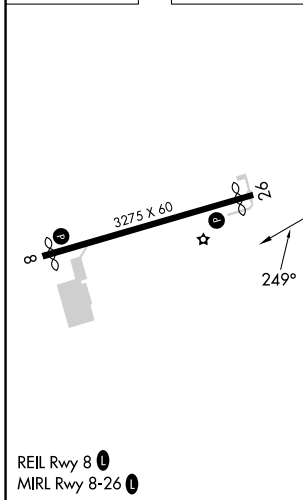
▲ NA Use Clarksburg altimeter setting, when not received,
use Buckhannon altimeter setting.

MISSED APPROACH: Climbing right
turn to 4500 direct UCOYA and hold.

CKB ASOS 127.825	CLARKSBURG APP CON ★ 121.15 284.65	CTAF 122.9 0
----------------------------	--	------------------------



ELEV 1755	TDZE 1755
-----------	-----------



CATEGORY	A	B	C	D
LNAV MDA	2460-1	705 (800-1)	NA	
C CIRCLING	2520-1 765 (800-1)	2520-1¼ 765 (800-1¼)	NA	

NE-4, 05 SEP 2024 to 03 OCT 2024

NE-4, 05 SEP 2024 to 03 OCT 2024