

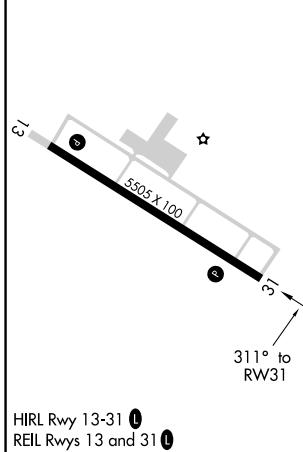
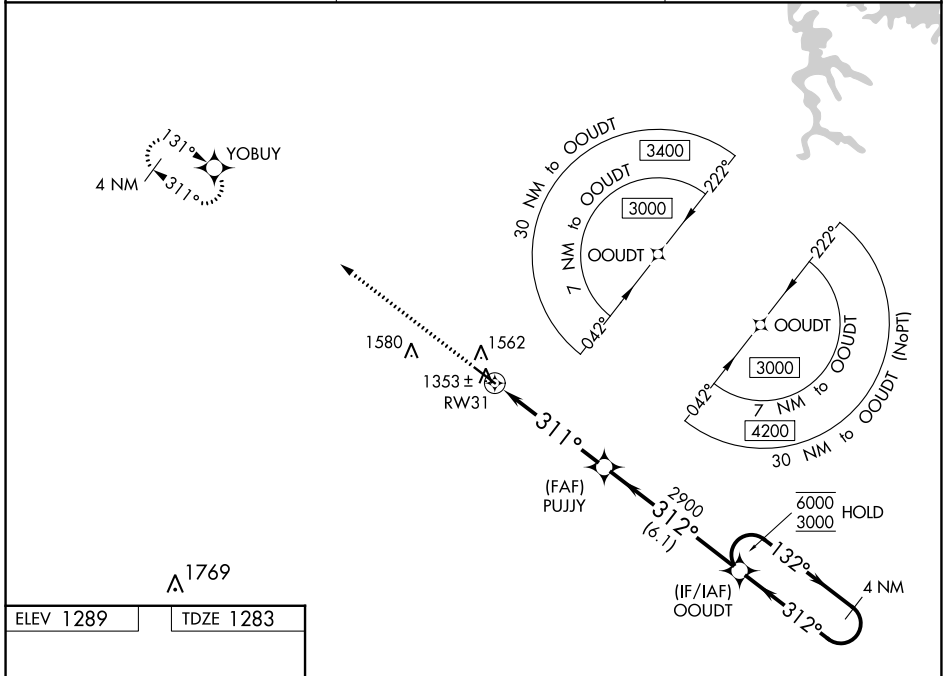
WAAS CH 99511 W31A	APP CRS 311°	Rwy Idg TDZE Apt Elev	5505 1283 1289
----------------------------------------	------------------------	-----------------------------	-------------------------------------------

RNAV (GPS) RWY 31

PAULDING NORTHWEST ATLANTA (PUJ)

RNP APCH.	MISSED APPROACH: Climb to 3000 direct YOBUY and hold.
<p>▼ ▲ For uncompensated Baro-VNAV systems, LNAV/VNAV NA below -17°C or above 54°C.</p>	

AWOS-3 126.225	ATLANTA APP CON 121.0 268.7	UNICOM 123.075 (CTAF) 0
--------------------------	---------------------------------------	-----------------------------------



3000	YOBUY	OOUDT	4 NM Holding Pattern
*LNAV only.	*1.1 NM to RWY 31	PUJYY 2900	132° → 6000 ← 312° 3000
RWY 31		2900	GP 3.00° TCH 48
	-1.1 NM	-3.8 NM	6.1 NM
CATEGORY	A	B	C
LPV DA	1483- ³ / ₄ 200 (200- ³ / ₄)		
LNAV/VNAV DA	1582- ⁷ / ₈ 299 (300- ⁷ / ₈)		
LNAV MDA	1680-1 397 (400-1)	1680-1 ¹ / ₈ 397 (400-1 ¹ / ₈)	
C CIRCLING	1880-1 591 (600-1)	1940-1 ³ / ₄ 651 (700-1 ³ / ₄)	1940-2 651 (700-2)

SE-4, 05 SEP 2024 to 03 OCT 2024

SE-4, 05 SEP 2024 to 03 OCT 2024