

APP CRS	Rwy Idg	3701
339°	TDZE	55
	Apt Elev	55

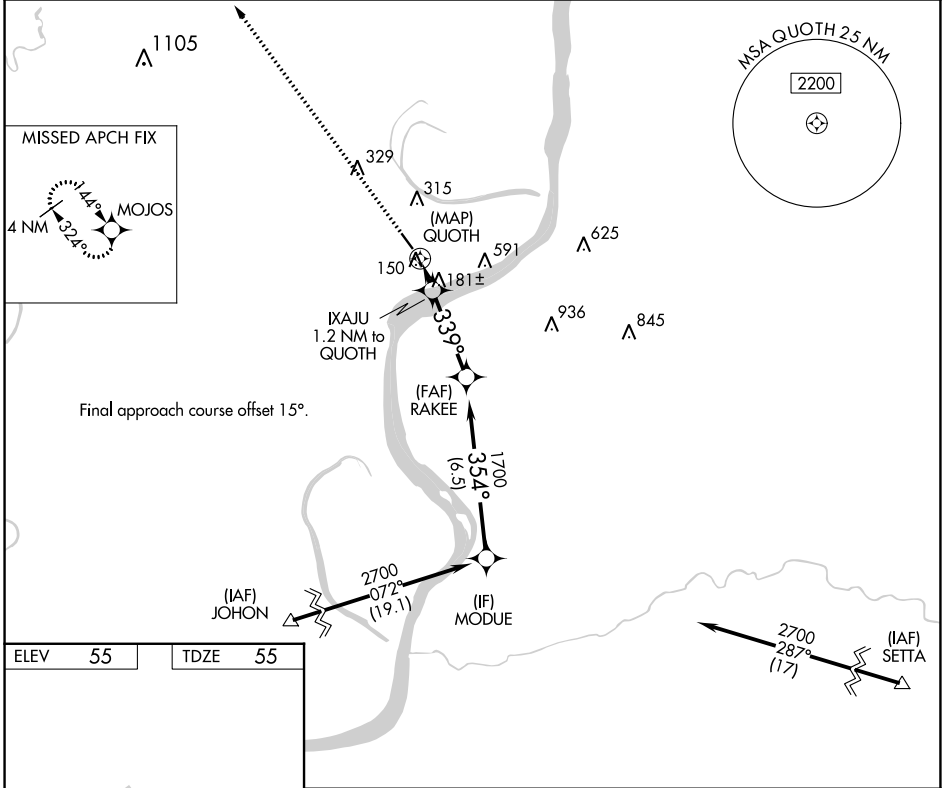
RNAV (GPS) RWY 32

CONCORDIA PARISH (ØR4)

NA DME/DME RNP-0.3 NA. Use Natchez altimeter setting; when not received, use Esler Rgnl altimeter setting and increase all MDA 60 feet and Circling Cat C visibility ¼ mile. Helicopter visibility reduction below ¾ SM NA.

MISSED APPROACH: Climb to 2700 direct MOJOS and hold.

AWOS-3 118.2	HOUSTON CENTER 120.975 299.6	UNICOM 122.8 (CTAF) Ø
------------------------	--	---------------------------------



ELEV	55	TDZE	55
------	----	------	----

REIL Rwy 14 and 32 Ø
MIRL Rwy 14-32 Ø

2700	MOJOS				
		QUOTH	IXAJU 1.2 NM to QUOTH	RAKEE	MODUE
		640	339°	1700	354°
			≤ 3.00° TCH 50		2700
		0.5	1.2 NM	3.3 NM	6.5 NM
CATEGORY	A	B	C	D	
LNAV MDA	500-1	445 (500-1)	500-1 3/8 445 (500-1 3/8)	NA	
C CIRCLING	680-1	625 (700-1)	960-2 3/4 905 (1000-2 3/4)	NA	

SC-4, 05 SEP 2024 to 03 OCT 2024

SC-4, 05 SEP 2024 to 03 OCT 2024