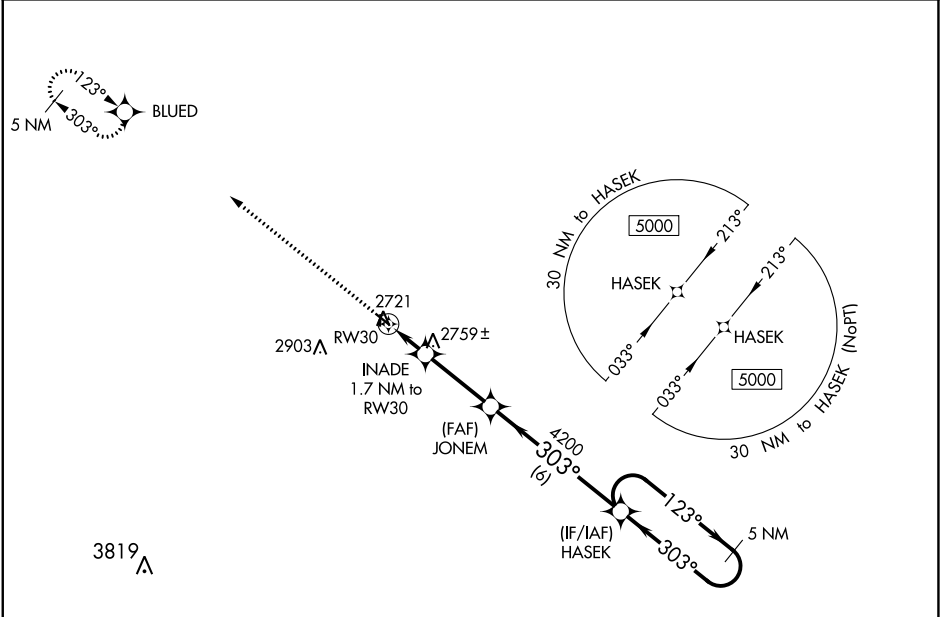


| | | | |
|--|------------------------|-----------------------------|---|
| WAAS CH 69436 W30A | APP CRS 303° | Rwy Idg TDZE Apt Elev | 3402 2677 2677 |
|--|------------------------|-----------------------------|---|

RNAV (GPS) RWY 30

CURTIS MUNI (47V)

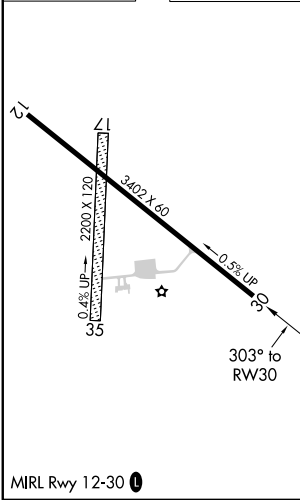
| | | |
|---|--|------------------------------|
| <p>NA Baro-VNAV NA. Use Mc Cook altimeter setting; when not received, use North Platte altimeter setting and increase all DA 10 feet and all MDA 20 feet. DME/DME RNP-0.3 NA. Night landing: Rwys 17, 35 NA.</p> | <p>MISSED APPROACH: Climb to 5000 direct BLUED and hold.</p> | |
| <p>MCK ASOS 119.025</p> | <p>DENVER CENTER 132.7 226.675</p> | <p>CTAF 122.9</p> |



NC-2, 05 SEP 2024 to 03 OCT 2024

NC-2, 05 SEP 2024 to 03 OCT 2024

| | |
|-----------|-----------|
| ELEV 2677 | TDZE 2677 |
|-----------|-----------|



| | | | |
|--|------------------------|-----------------------|----------------------|
| 5000 | BLUED | HASEK | 5 NM Holding Pattern |
| *LNAV only | INADE 1.7 NM to RWY 30 | JONEM 4200 | GP 3.00° TCH 40 |
| | 3240* | 4200 | |
| | 1.7 NM | 3 NM | 6 NM |
| CATEGORY | A | B | C |
| LPV DA | 3002-1½ | 325 (400-1½) | NA |
| LNAV/VNAV DA | 3002-1½ | 325 (400-1½) | NA |
| LNAV MDA | 3100-1 | 423 (500-1) | NA |
| <input checked="" type="checkbox"/> CIRCLING | 3200-1 523 (600-1) | 3380-1 703 (800-1) | NA |