

COUSHATTA, LOUISIANA

AL-10410 (FAA)

20198

WAAS CH <b>93842</b> <b>W18A</b>	APP CRS <b>179°</b>	Rwy Idg TDZE <b>177</b> Apt Elev <b>177</b>	<b>5002</b>
--	------------------------	---	-------------

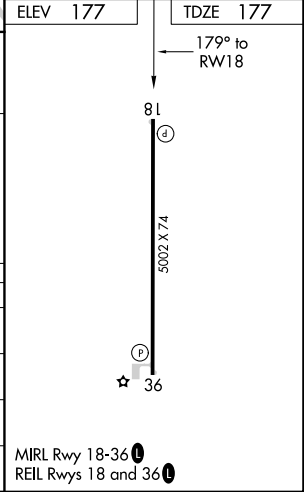
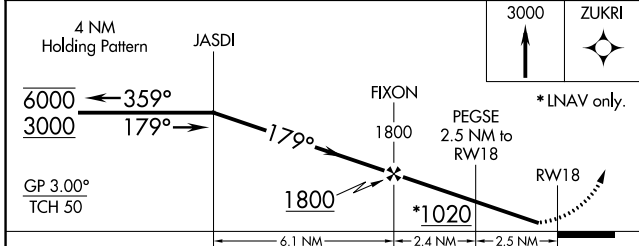
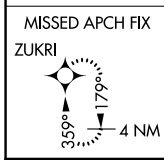
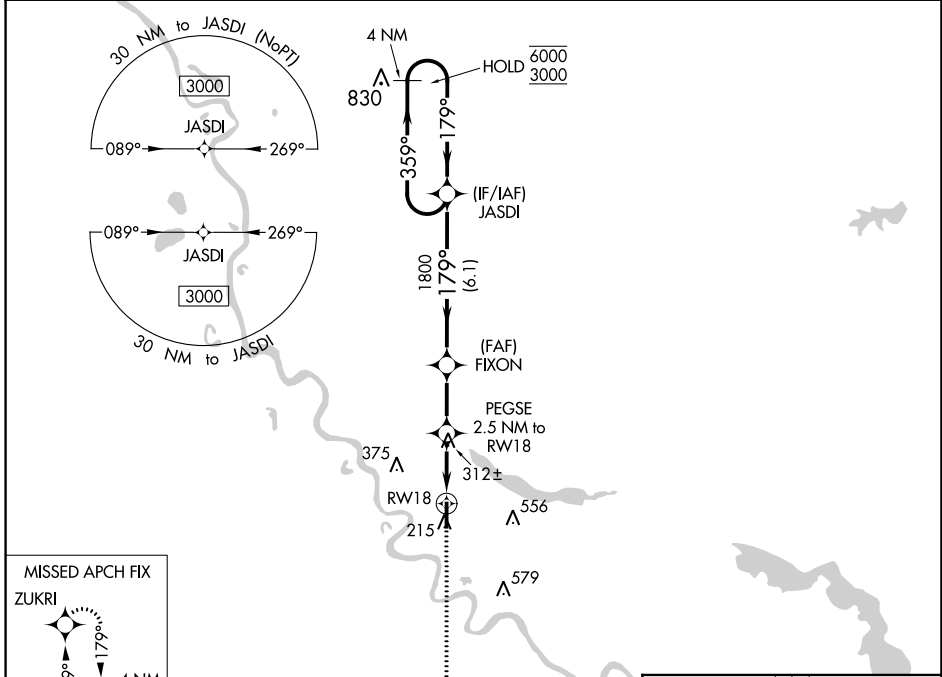
# RNAV (GPS) RWY 18

THE RED RIVER (ØR7)

RNP APCH. MISSED APPROACH: Climb to 3000 direct ZUKRI and hold, continue climb in hold to 3000.

▼ Rwy 18 helicopter visibility reduction below ¼ SM NA.  
▲ NA Baro-VNAV NA. Use Natchitoches altimeter setting.

IER AWOS-3 <b>119.025</b>	POLK APP CON <b>132.05 254.8</b>	CTAF <b>122.9 0</b>
------------------------------	-------------------------------------	------------------------



CATEGORY	A	B	C	D
LPV DA	478-1 301 (400-1)			
LNAV/VNAV DA	632-1 <sup>3</sup> / <sub>8</sub> 455 (500-1 <sup>3</sup> / <sub>8</sub> )			
LNAV MDA	620-1	443 (500-1)	620-1 <sup>3</sup> / <sub>8</sub>	443 (500-1 <sup>3</sup> / <sub>8</sub> )
CIRCLING	660-1	483 (500-1)	920-2 <sup>1</sup> / <sub>4</sub> 743 (800-2 <sup>1</sup> / <sub>4</sub> )	940-2 <sup>1</sup> / <sub>2</sub> 763 (800-2 <sup>1</sup> / <sub>2</sub> )

MIRL Rwy 18-36 0  
REIL Rwy 18 and 36 0

COUSHATTA, LOUISIANA  
Orig 25APR19

31°59'N-93°18'W

# RNAV (GPS) RWY 18

THE RED RIVER (ØR7)

SC-4, 05 SEP 2024 to 03 OCT 2024

SC-4, 05 SEP 2024 to 03 OCT 2024