

WAAS CH <b>42734</b> <b>W10A</b>	APP CRS <b>099°</b>	Rwy Idg TDZE Apt Elev	<b>5000</b> <b>182</b> <b>185</b>
--	------------------------	-----------------------------	---

# RNAV (GPS) RWY 10

QUITMAN BROOKS COUNTY (4J5)

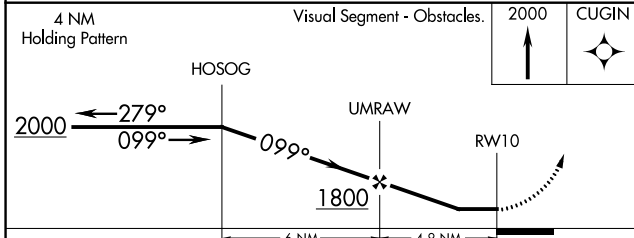
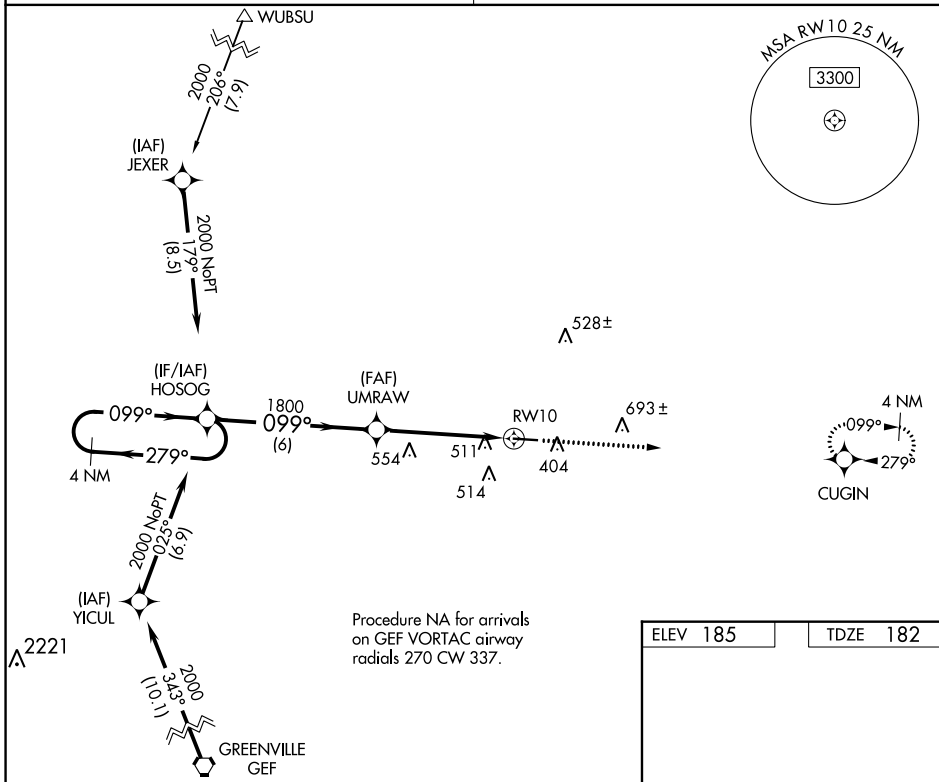
RNP APCH.

**NA** Procedure NA at night. Rwy 10 helicopter visibility reduction below 1 SM NA.  
**NA** Use Valdosta altimeter setting; when not received, use Thomasville altimeter setting and increase all MDA 20 feet; increase LP Cat C visibility 1/8 SM.

MISSED APPROACH: Climb to 2000  
 direct CUGIN and hold.

VALDOSTA APP CON\*  
**126.6**

CTAF  
**122.9**



ELEV 185	TDZE 182
----------	----------

099°  
 0.3% UP  
 5000 X 76  
 MRL Rwy 10-28

CATEGORY	A	B	C	D
LP MDA	740-1	558 (600-1)	740-1 5/8 558 (600-1 5/8)	NA
LNAV MDA	820-1	638 (700-1)	820-1 7/8 638 (700-1 7/8)	NA

SE-4, 05 SEP 2024 to 03 OCT 2024

SE-4, 05 SEP 2024 to 03 OCT 2024