

| | | | |
|--|------------------------|-----------------------------|---|
| WAAS CH 70338 W04A | APP CRS 040° | Rwy Idg TDZE Apt Elev | 2999 1371 1371 |
|--|------------------------|-----------------------------|---|

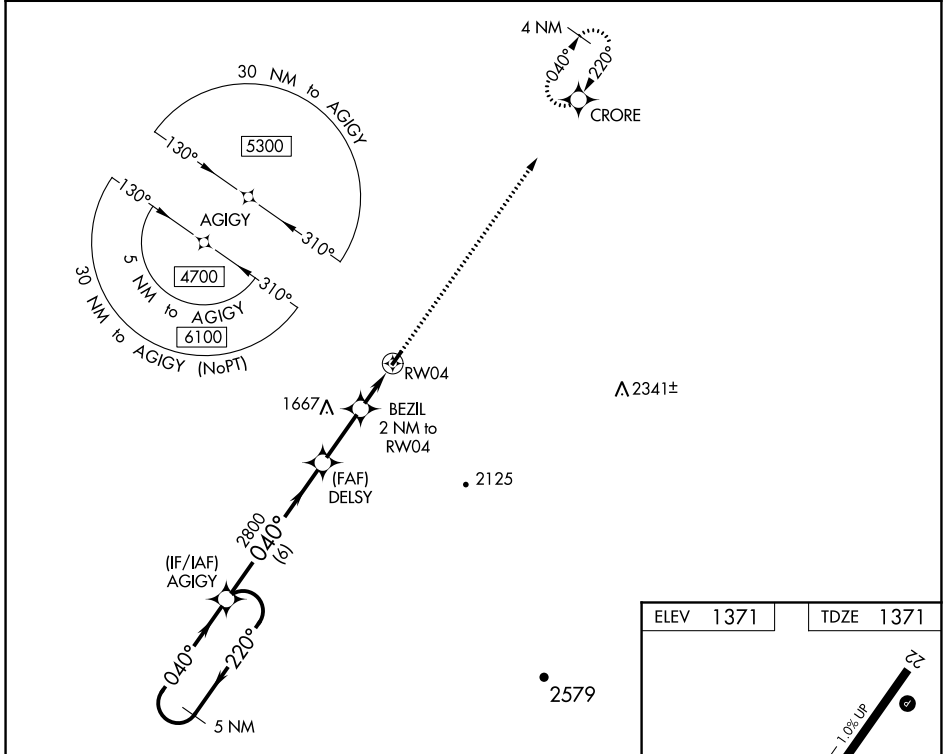
RNAV (GPS) RWY 4

MC CREARY COUNTY (18I)

⚠ DME/DME RNP-0.3 NA. Procedure NA at night. Helicopter visibility reduction below 1 SM NA. Use Williamsburg altimeter setting, when not received use London altimeter setting and increase all MDA 40 feet and increase LP and LNAV Cat C visibility 1/8 mile, increase Circling Cat C visibility 1/4 mile.

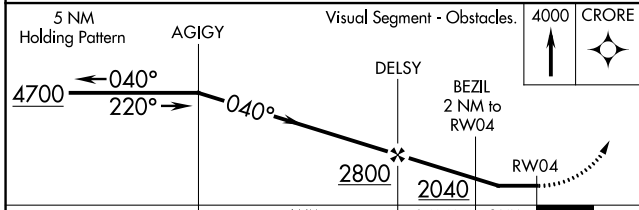
⚠ MISSED APPROACH: Climb to 4000 direct CRORE and hold.

| | |
|---|----------------------------------|
| INDIANAPOLIS CENTER 124.625 371.925 | UNICOM 123.05 (CTAF) 0 |
|---|----------------------------------|



SE-1, 05 SEP 2024 to 03 OCT 2024

SE-1, 05 SEP 2024 to 03 OCT 2024



| | |
|-----------|-----------|
| ELEV 1371 | TDZE 1371 |
|-----------|-----------|

MIREL Rwy 4-22 **0**
REIL Rws 4 and 22 **0**

| CATEGORY | A | B | C | D |
|-------------------|-----------------------|-----------------------|-------------------------------|----|
| LP MDA | 1920-1 | 549 (600-1) | 1920-1 5/8 549 (600-1 5/8) | NA |
| LNAV MDA | 1940-1 | 569 (600-1) | 1940-1 5/8 569 (600-1 5/8) | NA |
| C CIRCLING | 1940-1 569 (600-1) | 2000-1 629 (700-1) | 2020-1 3/4 649 (700-1 3/4) | NA |